



Borrör
Drillpipes

Teknisk specifikation

Driconeq's borrhör har följande specifikationer.

Rörmaterial

Brottgräns [Rm] min.	689 N/mm ²
Sträckgräns [ReH] min.	552 N/mm ²
Förlängning [A5] min.	15%

Ändstycken

Ythårdhet	58-62 HRC
Djup	0,1-0,2 mm
Kärnans hårdhet	32-36 HRC

Technical specification

Driconeq's drillpipes have the following specifications.

Tubematerial

Tensile strength [Rm] min.	689 N/mm ² / 100 000 PSI
Yield strength [ReH] min.	552 N/mm ² / 80 000 PSI
Elongation [A5] min	15 %

Tooljoints

Surface hardness	58-62 HRC
Depth	0,1-0,2 mm
Core hardness	32-36 HRC

Innehållsförteckning / Index

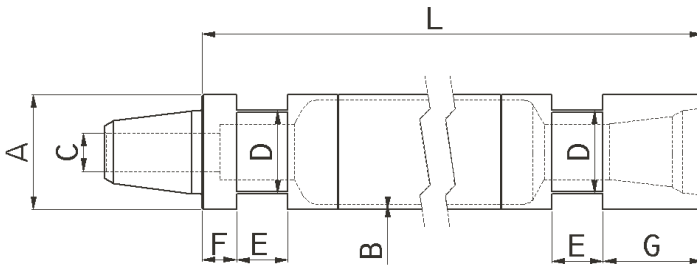
4	Driconeq Pipe
10	Atlas Copco ROC
11	Atlas Copco Simba
12	CR Pipe
13	Cubex
14	Driltech Gator
15	Driltech T25KW/D25/40
16	FEDP/LUGS
16	Hausherr
17	IR DM25
18	IR CM (695/760/780)
18	IR T4
20	IR Pipe
21	IR TH60
21	Nordmeyer
22	Sandvik BPI
23	Schramm Carousell
23	Schramm T64
24	Schramm NT/WF
24	Start Pipe
25	Speed Star
26	Drill Collar

Alla andra dimensioner och längder på förfrågan.

All other dimensions and lengths on request.



Driconeq Pipe

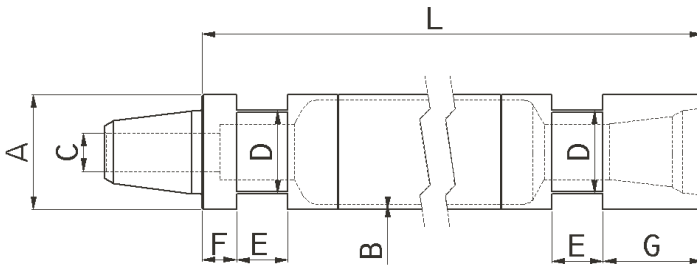


OD A	WT B	Length L	Weight Kg	Measurements, mm					Thread Box	Thread Pin	Product No.
				C	D	E	F	G			
38	6.3	1500	8	12	32.5	30	10	60	NC 10	NC 10	10-1649
44	6.3	1500	10	20	35	40	27	70	NC 12	NC 12	10-1847
47	6.3	1500	10.5	22	36	32	30	63	NC 13	NC 13	10-2016
48	5.0	500	4	22	41	40	27	52	RD40-6	RD40-6	10-2820
48	5.0	1000	7.5	22	41	40	27	52	RD40-6	RD40-6	10-2819
51	5.0	1000	7.2	22	41	40	27	52	RD40-6	RD40-6	10-1513
51	5.0	1500	10.5	22	41	40	27	52	RD40-6	RD40-6	10-1514
51	5.0	1500	10.5	25	40	40	27	60	RD40-6	RD40-6	10-2860
51	5.0	2000	13	22	41	40	27	52	RD40-6	RD40-6	10-2142
51	5.0	3000	18	22	41	40	27	52	RD40-6	RD40-6	10-1405
51	5.0	4000	24,3	22	41	40	27	52	RD40-6	RD40-6	10-2516
51	6.3	3000	19	25	41	40	27	60	RD40-6	RD40-6	10-2901
54	6.3	3000	21	25	41	40	27	60	RD40-6	RD40-6	10-2902
57	6.3	1000	9.2	25	45	40	20	60	RD40-6	RD40-6	10-2461
57	6.3	2000	15,3	25	45	40	20	60	RD40-6	RD40-6	10-2462
57	6.3	3000	21,4	25	45	40	20	60	RD40-6	RD40-6	10-2463
60	10	1500	19.5	22	45	50	40	102	NC 16	NC 16	10-2530
60	6.3	1000	10.3	25	41	40	27	70	NC 16	NC 16	10-2286
60	6.3	2000	18.7	25	41	40	27	70	NC 16	NC 16	10-2287
60	6.3	3000	27.1	25	41	40	27	70	NC 16	NC 16	10-2288
60	6.3	6000	52.3	25	41	40	27	70	NC 16	NC 16	10-2289
63	10	1500	20	25	50	40	27	80	TR51-1/4	TR51-1/4	10-1465
63	5.0	3000	24	30	50	40	27	67	RD 50-6	RD 50-6	10-1406
63	10	3000	39	25	50	40	27	80	TR51-1/4	TR51-1/4	10-1446
63	5.0	1000	7.5	30	50	40	27	67	RD50-6	RD50-6	10-2163
63	5.0	1500	11	30	50	40	27	67	RD50-6	RD50-6	10-2632
63	7.1	3000	31	25					WW 63,5	WW 63,5	10-2261
70	4.0	600	7.5	30	55	40	27	85	ACT	ACT	10-2157
70	4.0	1000	10	30	55	40	27	85	ACT	ACT	10-2147
70	4.0	1000	11.2	30					May JR	May JR	10-2962
70	4.0	1000	10	30	55	40	27	62	RD 50-6	RD 50-6	10-1002
70	4.0	1200	11	30	55	40	27	85	RD50-6	RD50-6	10-2169
70	4.0	1500	13	30	55	40	27	85	ACT(NWY)	ACT(NWY)	10-1541
70	4.0	1500	14.5	30					2 3/8" May JR	2 3/8" May JR	10-2961
70	4.0	1500	13	30	55	40	27	62	RD 50-6	RD 50-6	10-1003
70	4.0	1524	14	30	55	40	27	85	ACT	ACT	10-2676
70	4.0	2000	17	30.5	47	50	25	67	HOLMAN	HOLMAN	10-1413
70	4.0	2000	17	30	55	40	27	62	RD 50-6	RD 50-6	10-1004
70	4.0	3000	23	30	55	40	27	85	ACT(NWY)	ACT(NWY)	10-1540
70	4.0	3000	23	30.5	47	50	25	67	HOLMAN	HOLMAN	10-1414
70	4.0	3000	23	30	55	40	27	62	RD 50-6	RD 50-6	10-1005

OD A	WT B	Lenght L	Weight Kg	Measurements, mm					Thread Box	Thread Pin	Product No.
				C	D	E	F	G			
70	6.3	1500	18	30	55	40	27	85	ACT	ACT	10-2559
70	6.3	3000	33	30	55	40	27	85	ACT	ACT	10-2139
73	6.3	1500	23	31,75					2 3/8" May JR	2 3/8" May JR	10-2217
73	6.3	3000	36	31,75					2 3/8" May JR	2 3/8" May JR	10-2216
73	6.3	3000	36.5	31,75	55	40		85	2 3/8" May JR	2 3/8" May JR	10-2850
73	7.1	3048	38	31.75	55	40		85	2 3/8" May JR	2 3/8" May JR	10-1722
73	7.1	6096	74	31.75	55	40		85	2 3/8" May JR	2 3/8" May JR	10-1723
73	8.8	6096	92	31,75	60,3	102		102	2 3/8" May JR	2 3/8" May JR	10-2020
76	4.0	1000	12	30	65	40	27	85	2 3/8" Reg	2 3/8" Reg	10-1014
76	4.0	1000	12	30	65	40	27	85	RD 50-6	RD 50-6	10-1010
76	4.0	1500	16	30	65	40	27	85	2 3/8" Reg	2 3/8" Reg	10-1015
76	4.0	1500	16	30	65	40	27	85	RD 50-6	RD 50-6	10-1011
76	4.0	1524	14.5	30	65	40	27	85	2 3/8" May JR	2 3/8" May JR	10-2010
76	4.0	2000	19	30	65	40	27	85	2 3/8" Reg	2 3/8" Reg	10-1017
76	4.0	2000	19	30	65	40	27	85	RD 50-6	RD 50-6	10-1012
76	4.0	3000	24	30	65	40	27	85	2 3/8" Reg	2 3/8" Reg	10-1018
76	4.0	3000	24.8	34	65	40	27	85	2 3/8" Reg	2 3/8" Reg	10-2848
76	4.0	3000	31	34	65	40	27	78	2 3/8" Reg	2 3/8" Reg	10-2849
76	4.0	3000	24	30	65	40	27	85	RD 50-6	RD 50-6	10-1013
76	4.0	3048	25.8	30	65	40	27	85	2 3/8" May JR	2 3/8" May JR	10-2009
76	4.0	4000	31	30	65	40	27	85	2 3/8" Reg	2 3/8" Reg	10-1258
76	6.3	1000	17	30	65	40	27	85	2 3/8" Reg	2 3/8" Reg	10-1035
76	6.3	1000	17	30	65	40	27	85	RD 50-6	RD 50-6	10-1029
76	6.3	1500	23	30	65	40	27	85	2 3/8" Reg	2 3/8" Reg	10-1036
76	6.3	1500	22	30	60	50	38	102	2 3/8" Reg	2 3/8" Reg	10-2529
76	6.3	1500	23	30	65	40	27	85	RD 50-6	RD 50-6	10-1030
76	6.3	1524	20	30	57	40	27	85	2 3/8" May JR	2 3/8" May JR	10-2292
76	6.3	2000	28	30	65	40	27	85	2 3/8" Reg	2 3/8" Reg	10-1037
76	6.3	2000	27.5	30	60	50	38	102	2 3/8" Reg	2 3/8" Reg	10-2258
76	6.3	2000	28	30	65	40	27	85	RD 50-6	RD 50-6	10-1031
76	6.3	3000	37.5	38	70	50	15	125	2 3/8" May Reg	2 3/8" May Reg	10-2674
76	6.3	3000	39	30	65	40	27	85	2 3/8" Reg	2 3/8" Reg	10-1038
76	6.3	3000	39	30	65	40	27	85	RD 50-6	RD 50-6	10-1032
76	6.3	4000	49	30	65	40	27	85	2 3/8" Reg	2 3/8" Reg	10-1039
76	6.3	5000	61	30	65	40	27	85	2 3/8" Reg	2 3/8" Reg	10-1328
76	6.3	6000	72	30	65	40	27	85	2 3/8" Reg	2 3/8" Reg	10-1041
76	6.3	6000	70.4	30	60	40	27	85	2 3/8" Reg	2 3/8" Reg	10-2484
76	6.3	6000	72	30	65	40	27	85	RD 50-6	RD 50-6	10-1034
76	8.0	4000	52	30	65	40	27	85	2 3/8" Reg	2 3/8" Reg	10-1780
76	8.8	3048	50	31,75	57,15	58		102	2 3/8" May JR	2 3/8" May JR	10-2269
76	8.8	7620	115	31.75	55	40/50	25	85	2 3/8" May JR	2 3/8" May JR	10-1807
89	4.0	1000	13	43	65	40	27	110	2 3/8" IF	2 3/8" IF	10-1059
89	4.0	1000	13	30	65	40	27	78	2 3/8" Reg	2 3/8" Reg	10-1046
89	4.0	1000	13	36	65	40	27	110	2 7/8" Reg	2 7/8" Reg	10-1065
89	4.0	1000	13	43	65	40	27	78	RD 70-4	RD 70-4	10-1042
89	4.0	1500	18	43	65	40	27	110	2 3/8" IF	2 3/8" IF	10-1060
89	4.0	1500	18	30	65	40	27	78	2 3/8" Reg	2 3/8" Reg	10-1047
89	4.0	1500	18	36	65	40	27	110	2 7/8" Reg	2 7/8" Reg	10-1066
89	4.0	1500	18	43	65	40	27	78	RD 70-4	RD 70-4	10-1043
89	4.0	2000	22	43	65	40	27	110	2 3/8" IF	2 3/8" IF	10-1061
89	4.0	2000	22	30	65	40	27	78	2 3/8" Reg	2 3/8" Reg	10-1050
89	4.0	2000	22	36	65	40	27	110	2 7/8" Reg	2 7/8" Reg	10-1067
89	4.0	2000	22	43	65	40	27	78	RD 70-4	RD 70-4	10-1044
89	4.0	3000	28	43	65	40	27	110	2 3/8" IF	2 3/8" IF	10-1062
89	4.0	3000	28	30	65	40	27	78	2 3/8" Reg	2 3/8" Reg	10-1051
89	4.0	3000	28	36	65	40	27	110	2 7/8" Reg	2 7/8" Reg	10-1068
89	4.0	3000	28	43	65	40	27	78	RD 70-4	RD 70-4	10-1045



Driconeq Pipe

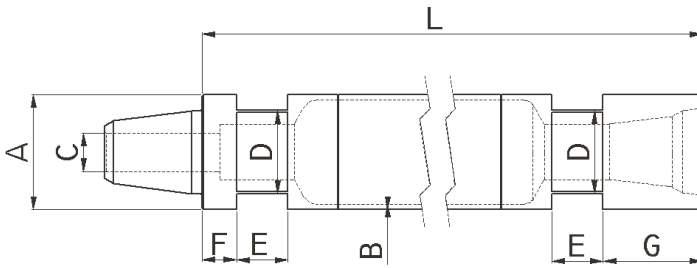


OD A	WT B	Length L	Weight Kg	Measurements, mm					Thread Box	Thread Pin	Product No.
				C	D	E	F	G			
89	6.3	500	11	43	75	40	27	110	2 3/8" IF	2 3/8" IF	10-2830
89	6.3	600	13.5	43	75	40	27	110	2 3/8" IF	2 3/8" IF	10-2691
89	6.3	700	15	43	75	40	27	110	2 3/8" IF	2 3/8" IF	10-2670
89	6.3	1000	17	43	65	40	27	110	2 3/8" IF	2 3/8" IF	10-1082
89	6.3	1000	17.5	43	75	40	27	110	2 3/8" IF	2 3/8" IF	10-2630
89	6.3	1000	17	30	65	40	27	78	2 3/8" Reg	2 3/8" Reg	10-1076
89	6.3	1000	17	36	65	40	27	110	2 7/8" Reg	2 7/8" Reg	10-1088
89	6.3	1000	17	43	65	40	27	78	RD 70-4	RD 70-4	10-1069
89	6.3	1300	22	43	75	40	27	110	2 3/8" IF	2 3/8" IF	10-2669
89	6.3	1400	23	43	75	40	27	110	2 3/8" IF	2 3/8" IF	10-2829
89	6.3	1500	24	43	65	40	27	110	2 3/8" IF	2 3/8" IF	10-1083
89	6.3	1500	24	43	75	40	27	110	2 3/8" IF	2 3/8" IF	10-2629
89	6.3	1500	24	30	65	40	27	78	2 3/8" Reg	2 3/8" Reg	10-1077
89	6.3	1500	24	36	65	40	27	110	2 7/8" Reg	2 7/8" Reg	10-1089
89	6.3	1500	24	43	65	40	27	78	RD 70-4	RD 70-4	10-1070
89	6.3	1700	28	43	75	40	27	110	2 3/8" IF	2 3/8" IF	10-2409
89	6.3	1800	31	30					2 3/8" IF	2 3/8" IF	10-2653
89	6.3	2000	30	43	65	40	27	110	2 3/8" IF	2 3/8" IF	10-1084
89	6.3	2000	30	30	65	40	27	78	2 3/8" Reg	2 3/8" Reg	10-1078
89	6.3	2000	30	36	65	40	27	110	2 7/8" Reg	2 7/8" Reg	10-1090
89	6.3	2000	30	43	65	40	27	78	RD 70-4	RD 70-4	10-1071
89	6.3	3000	43	43	65	40	27	110	2 3/8" IF	2 3/8" IF	10-1085
89	6.3	3000	43	53	75	40	27	110	2 3/8" IF	2 3/8" IF	10-2628
89	6.3	3000	46	38	70	50		116,5	2 3/8" May Reg	2 3/8" May Reg	10-2774
89	6.3	3000	43	30	65	40	27	78	2 3/8" Reg	2 3/8" Reg	10-1079
89	6.3	3000	43	36	65	40	27	110	2 7/8" Reg	2 7/8" Reg	10-1091
89	6.3	3000	43	43	65	40	27	78	RD 70-4	RD 70-4	10-1072
89	6.3	4000	56	43	65	40	27	110	2 3/8" IF	2 3/8" IF	10-1848
89	6.3	4000	56	30	65	40	27	78	2 3/8" Reg	2 3/8" Reg	10-1316
89	6.3	5000	69	30	65	40	27	78	2 3/8" Reg	2 3/8" Reg	10-1286
89	6.3	6000	81	43	65	40	27	110	2 3/8" IF	2 3/8" IF	10-1087
89	6.3	6000	83.5	38	70	50		116,5	2 3/8" May Reg	2 3/8" May Reg	10-2588
89	6.3	6000	81	30	65	40	27	78	2 3/8" Reg	2 3/8" Reg	10-1081
89	6.3	6000	81	36	65	40	27	110	2 7/8" Reg	2 7/8" Reg	10-1093
89	6.3	6000	82.7	38	70	40	10	125	2 3/8" May Reg	2 3/8" May Reg	10-2583
89	6.3	6000	81	43	65	40	27	78	RD 70-4	RD 70-4	10-1074
89	8.0	1000	22	30	65	40	27	78	2 3/8" Reg	2 3/8" Reg	10-1877
89	8.0	1000	22	36	65	40	27	110	2 7/8" Reg	2 7/8" Reg	10-1670
89	8.0	2000	35	30	65	40	27	78	2 3/8" Reg	2 3/8" Reg	10-1611
89	8.0	2000	35	36	65	40	27	110	2 7/8" Reg	2 7/8" Reg	10-1539
89	8.0	3000	52	30	65	40	27	78	2 3/8" Reg	2 3/8" Reg	10-1564
89	8.0	3000	52	36	65	40	27	110	2 7/8" Reg	2 7/8" Reg	10-1571
89	8.8	2000	38.5	30	65	40	78	78	2 3/8" Reg	2 3/8" Reg	10-2377
102	6.3	1000	25	36	75	50	30	100	2 7/8" Reg	2 7/8" Reg	10-1849
102	6.3	1500	33	36	75	50	30	100	2 7/8" Reg	2 7/8" Reg	10-1850
102	6.3	2000	40	36	75	50	30	100	2 7/8" Reg	2 7/8" Reg	10-1851
102	6.3	3000	55	36	75	50	30	100	2 7/8" Reg	2 7/8" Reg	10-1852
102	6.3	4000	70	36	75	50	30	100	2 7/8" Reg	2 7/8" Reg	10-1853
102	6.3	5000	85	36	75	50	30	100	2 7/8" Reg	2 7/8" Reg	10-1761

OD A	WT B	Lenght L	Weight Kg	Measurements, mm					Thread Box	Thread Pin	Product No.
				C	D	E	F	G			
102	6.3	6000	100	36	75	50	30	100	2 7/8" Reg	2 7/8" Reg	10-1854
102	6.3	6096	105	43	76	51	20	114	3 1/2" Reg	3 1/2" Reg	10-2023
105	8.8	6096	103	43	76	51	20	104,78	2 7/8" IF	2 7/8" IF	10-2022
114	6.3	1000	26	53	95	50	30	95	2 3/8" IF	2 3/8" IF	10-1126
114	6.3	1000	26	58	95	50	30	115	3 1/2" FH	3 1/2" FH	10-1153
114	6.3	1000	26	58	95	50	30	120	3 1/2" IF	3 1/2" IF	10-1159
114	6.3	1000	26	43	95	50	30	75	3 1/2" Reg	3 1/2" Reg	10-1132
114	6.3	1000	26	58	95	50	30	95	NC 35	NC 35	10-1150
114	6.3	1500	35	53	95	50	30	95	2 3/8" IF	2 3/8" IF	10-1127
114	6.3	1500	35	58	95	50	30	115	3 1/2" FH	3 1/2" FH	10-1154
114	6.3	1500	35	58	95	50	30	120	3 1/2" IF	3 1/2" IF	10-1160
114	6.3	1500	35	43	95	50	30	75	3 1/2" Reg	3 1/2" Reg	10-1134
114	6.3	1500	35	58	95	50	30	95	NC 35	NC 35	10-1151
114	6.3	2000	43	53	95	50	30	95	2 3/8" IF	2 3/8" IF	10-1128
114	6.3	2000	43	58	95	50	30	115	3 1/2" FH	3 1/2" FH	10-1155
114	6.3	2000	43	58	95	50	30	120	3 1/2" IF	3 1/2" IF	10-1161
114	6.3	2000	43	43	95	50	30	75	3 1/2" Reg	3 1/2" Reg	10-1138
114	6.3	2000	43	58	95	50	30	95	NC 35	NC 35	10-1149
114	6.3	3000	60	53	95	50	30	95	2 3/8" IF	2 3/8" IF	10-1129
114	6.3	3000	60	58	95	50	30	115	3 1/2" FH	3 1/2" FH	10-1156
114	6.3	3000	60	58	95	50	30	120	3 1/2" IF	3 1/2" IF	10-1162
114	6.3	3000	60	43	95	50	30	75	3 1/2" Reg	3 1/2" Reg	10-1139
114	6.3	3000	60	58	95	50	30	95	NC 35	NC 35	10-1152
114	6.3	4000	85	58	95	50	30	120	3 1/2" IF	3 1/2" IF	10-1491
114	6.3	4000	85	43	95	50	30	75	3 1/2" Reg	3 1/2" Reg	10-1176
114	6.3	5000	93	58	95	50	30	120	3 1/2" IF	3 1/2" IF	10-1727
114	6.3	5000	93	43	95	50	30	75	3 1/2" Reg	3 1/2" Reg	10-1245
114	6.3	6000	110	53	95	50	30	95	2 3/8" IF	2 3/8" IF	10-1131
114	6.3	6000	110	58	95	50	30	115	3 1/2" FH	3 1/2" FH	10-1158
114	6.3	6000	110	58	95	50	30	120	3 1/2" IF	3 1/2" IF	10-1164
114	6.3	6000	110	43	95	50	30	75	3 1/2" Reg	3 1/2" Reg	10-1141
114	6.3	6000	81	58	95	50	30	95	NC 35	NC 35	10-1293
114	6.3	6096	111	43	95	50	30	75	3 1/2" Reg	3 1/2" Reg	10-1672
114	8.8	1000	31	43	95	50	30	75	3 1/2" Reg	3 1/2" Reg	10-1171
114	8.8	1000	31	43	95	50	30	115	3 1/2" FH	3 1/2" FH	10-1622
114	8.8	1000	31	58	95	50	30	120	3 1/2" IF	3 1/2" IF	10-1185
114	8.8	1000	31	58	95	50	30	95	NC 35	NC 35	10-1179
114	8.8	1500	42	58	95	50	30	115	3 1/2" FH	3 1/2" FH	10-1229
114	8.8	1500	42	58	95	50	30	120	3 1/2" IF	3 1/2" IF	10-1186
114	8.8	1500	42	43	95	50	30	75	3 1/2" Reg	3 1/2" Reg	10-1172
114	8.8	1500	42	58	95	50	30	95	NC 35	NC 35	10-1180
114	8.8	2000	54	58	95	50	30	115	3 1/2" FH	3 1/2" FH	10-1623
114	8.8	2000	54	58	95	50	30	120	3 1/2" IF	3 1/2" IF	10-1187
114	8.8	2000	54	43	95	50	30	75	3 1/2" Reg	3 1/2" Reg	10-1173
114	8.8	2000	54	58	95	50	30	95	NC 35	NC 35	10-1181
114	8.8	3000	77	53	95	50	30	95	2 7/8" IF	2 7/8" IF	10-1165
114	8.8	3000	77	58	95	50	30	115	3 1/2" FH	3 1/2" FH	10-1230
114	8.8	3000	77	58	95	50	30	120	3 1/2" IF	3 1/2" IF	10-1188
114	8.8	3000	77	43	95	50	30	75	3 1/2" Reg	3 1/2" Reg	10-1174
114	8.8	3000	77	58	95	50	30	95	NC 35	NC 35	10-1182
114	8.8	4000	100	43	95	50	30	75	3 1/2" Reg	3 1/2" Reg	10-1344
114	8.8	5000	123	58	95	50	30	120	3 1/2" IF	3 1/2" IF	10-1459
114	8.8	6000	136	53	95	50	30	95	2 7/8" IF	2 7/8" IF	10-1167
114	8.8	6000	136	58	95	50	30	115	3 1/2" FH	3 1/2" FH	10-1231
114	8.8	6000	136	58	95	50	30	120	3 1/2" IF	3 1/2" IF	10-1190
114	8.8	6000	136	43	95	50	30	75	3 1/2" Reg	3 1/2" Reg	10-1176
114	8.8	6000	136	58	95	50	30	95	NC 35	NC 35	10-1184
114	8.8	6096	138	53	95	50	30	95	2 7/8" IF	2 7/8" IF	10-1168



Driconeq Pipe

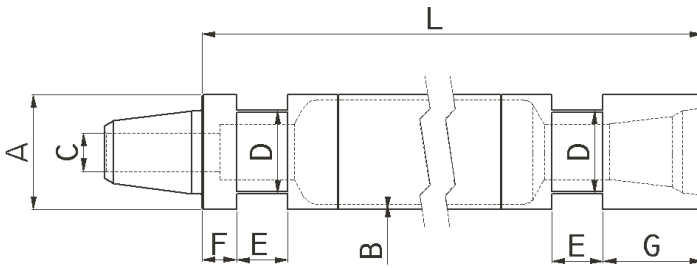


OD A	WT B	Length L	Weight Kg	Measurements, mm					Thread Box	Thread Pin	Product No.
				C	D	E	F	G			
114	8.8	6096	138	58	95	50	30	115	3 1/2" FH	3 1/2" FH	10-1624
114	8.8	6096	138	58	95	50	30	120	3 1/2" IF	3 1/2" IF	10-1447
114	8.8	6096	138	43	95	50	30	75	3 1/2" Reg	3 1/2" Reg	10-1736
114	8.8	7620	185	53	95	50	30	95	2 7/8" IF	2 7/8" IF	10-1169
114	8.8	7620	185	43	95	50	30	75	3 1/2" Reg	3 1/2" Reg	10-1226
127	6.3	1000	36	58	95	50	30	120	3 1/2" IF	3 1/2" IF	10-1857
127	6.3	1000	36	43	95	50	30	80	3 1/2" Reg	3 1/2" Reg	10-1300
127	6.3	1000	36	58	95	50	30	90	RD 90-4	RD 90-4	10-1863
127	6.3	1500	43	58	95	50	30	120	3 1/2" IF	3 1/2" IF	10-1858
127	6.3	1500	43	43	95	50	30	80	3 1/2" Reg	3 1/2" Reg	10-1301
127	6.3	1500	43	58	95	50	30	90	RD 90-4	RD 90-4	10-1864
127	6.3	2000	52	58	95	50	30	120	3 1/2" IF	3 1/2" IF	10-1859
127	6.3	2000	52	43	95	50	30	80	3 1/2" Reg	3 1/2" Reg	10-1314
127	6.3	2000	52	58	95	50	30	90	RD 90-4	RD 90-4	10-1865
127	6.3	3000	61	58	95	50	30	120	3 1/2" IF	3 1/2" IF	10-1401
127	6.3	3000	61	43	95	50	30	80	3 1/2" Reg	3 1/2" Reg	10-1274
127	6.3	3000	61	58	95	50	30	90	RD 90-4	RD 90-4	10-1705
127	6.3	5000	112	58	95	50	30	120	3 1/2" IF	3 1/2" IF	10-2063
127	6.3	6000	127	58	95	50	30	120	3 1/2" IF	3 1/2" IF	10-1370
127	6.3	6000	127	43	95	50	30	80	3 1/2" Reg	3 1/2" Reg	10-1307
127	6.3	6000	127	58	95	50	30	90	RD 90-4	RD 90-4	10-1866
127	8.8	1000	38	58	95	50	30	120	3 1/2" IF	3 1/2" IF	10-1867
127	8.8	1000	38	43	95	50	30	80	3 1/2" Reg	3 1/2" Reg	10-1308
127	8.8	1500	51	58	95	50	30	120	3 1/2" IF	3 1/2" IF	10-1814
127	8.8	1500	51	43	95	50	30	80	3 1/2" Reg	3 1/2" Reg	10-1309
127	8.8	2000	64	58	95	50	30	120	3 1/2" IF	3 1/2" IF	10-1868
127	8.8	2000	64	43	95	50	30	80	3 1/2" Reg	3 1/2" Reg	10-1310
127	8.8	3000	90	58	95	50	30	120	3 1/2" IF	3 1/2" IF	10-1869
127	8.8	3000	90	43	95	50	30	80	3 1/2" Reg	3 1/2" Reg	10-1311
127	8.8	5000	111						3 1/2" IF	3 1/2" IF	10-2062
127	8.8	5000	155	43	95	50	30	80	3 1/2" Reg	3 1/2" Reg	10-1291
127	8.8	6000	167	58	95	50	30	120	3 1/2" IF	3 1/2" IF	10-1870
127	8.8	6000	167	43	95	50	30	80	3 1/2" Reg	3 1/2" Reg	10-1312
127	8.8	6096	168	58	95	50	30	120	3 1/2" IF	3 1/2" IF	10-1729
140	8.8	1000	45	58	120	50	30	95	3 1/2" IF	3 1/2" IF	10-1874
140	8.8	1000	45	43	120	50	30	95	3 1/2" Reg	3 1/2" Reg	10-1416
140	8.8	1000	45	58	120	50	30	95	4 1/2" Reg	4 1/2" Reg	10-1320
140	8.8	1500	48	58	120	50	30	95	3 1/2" IF	3 1/2" IF	10-1420
140	8.8	1500	48	43	120	50	30	95	3 1/2" Reg	3 1/2" Reg	10-1418
140	8.8	1500	48	58	120	50	30	95	4 1/2" Reg	4 1/2" Reg	10-1321
140	8.8	2000	76	58	120	50	30	95	3 1/2" IF	3 1/2" IF	10-1875
140	8.8	2000	76	43	120	50	30	95	3 1/2" Reg	3 1/2" Reg	10-1425
140	8.8	2000	76	58	120	50	30	95	4 1/2" Reg	4 1/2" Reg	10-1322
140	8.8	3000	104	58	120	50	30	95	3 1/2" IF	3 1/2" IF	10-1518
140	8.8	3000	104	43	120	50	30	95	3 1/2" Reg	3 1/2" Reg	10-1426
140	8.8	3000	104	58	120	50	30	95	4 1/2" Reg	4 1/2" Reg	10-1323
140	8.8	4000	131	58	120	50	30	95	3 1/2" IF	3 1/2" IF	10-1876
140	8.8	4000	131	43	120	50	30	95	3 1/2" Reg	3 1/2" Reg	10-1871

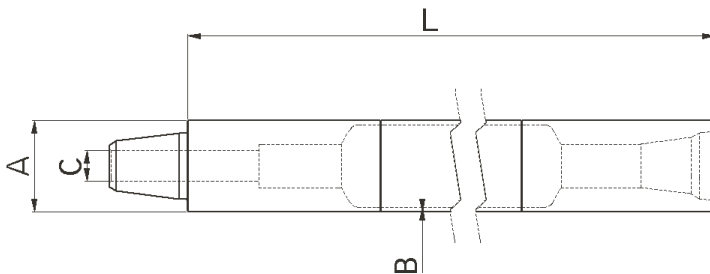
OD A	WT B	Lenght L	Weight Kg	Measurements, mm					Thread Box	Thread Pin	Product No.
				C	D	E	F	G			
140	8.8	4000	131	58	120	50	30	95	4 1/2" Reg	4 1/2" Reg	10-1572
140	8.8	5000	160	58	120	50	30	95	3 1/2" IF	3 1/2" IF	10-1519
140	8.8	5000	160	43	120	50	30	95	3 1/2" Reg	3 1/2" Reg	10-1872
140	8.8	5000	160	58	120	50	30	95	4 1/2" Reg	4 1/2" Reg	10-1495
140	8.8	6000	187	58	120	50	30	95	3 1/2" IF	3 1/2" IF	10-1520
140	8.8	6000	187	43	120	50	30	95	3 1/2" Reg	3 1/2" Reg	10-1873
140	8.8	6000	187	58	120	50	30	95	4 1/2" Reg	4 1/2" Reg	10-1324
140	8.8	6000	187	53	120	50	30	95	NC 35	NC 35	10-1548
140	8.8	7620	237	47	120	50	30	95	3 1/2" Beco	3 1/2" Beco	10-1590
168	12.5	1000	120	80	152.4	70	30	127	6 5/8 Reg	6 5/8 Reg	10-1371
168	12.5	1500	145	80	152.4	70	30	127	6 5/8 Reg	6 5/8 Reg	10-1345
168	12.5	2000	170	80	152.4	70	30	127	6 5/8 Reg	6 5/8 Reg	10-1372
168	12.5	3000	236	58	152.4	70	30	127	4 1/2" Reg	4 1/2" Reg	10-1431
168	12.5	3000	228	80	152.4	70	30	127	6 5/8 Reg	6 5/8 Reg	10-1373
168	12.5	6000	409	58	152.4	70	30	127	4 1/2" Reg	4 1/2" Reg	10-1432
168	12.5	6000	396	80	152.4	70	30	127	6 5/8 Reg	6 5/8 Reg	10-1374
168	14.2	1500	117	58	120	50	30	105	4 1/2" Reg	4 1/2" Reg	10-1640
168	14.2	2000	146.5	58	120	50	30	105	4 1/2" Reg	4 1/2" Reg	10-2541
168	14.2	3000	208	58	120	50	30	105	4 1/2" Reg	4 1/2" Reg	10-1348
168	8.8	1000	84	58	120	50	30	105	4 1/2" Reg	4 1/2" Reg	10-1577
168	8.8	1500	101	58	120	50	30	105	4 1/2" Reg	4 1/2" Reg	10-1578
168	8.8	2000	118	58	120	50	30	105	4 1/2" Reg	4 1/2" Reg	10-1482
177	20	1524	173	58	127	101,6	76,2	200	4 1/2" Beco	4 1/2" Beco	10-2296
178	8.8	3000	181	58	152,4	50	30	70	4 1/2" Reg	4 1/2" Reg	10-2032
194	12	2500	200	80	152,4	70	30	127	6 5/8" Reg	6 5/8" Reg	10-2247
194	12	5000	344	80	152,4	70	30	127	6 5/8" Reg	6 5/8" Reg	10-2293
219	12	1000	159	80	178	70	30	127	6 5/8" Reg	6 5/8" Reg	10-2931
219	12	1500	191	80	178	70	30	127	6 5/8" Reg	6 5/8" Reg	10-2930
219	12	2000	222	80	178	70	30	127	6 5/8" Reg	6 5/8" Reg	10-2929
219	12	3000	285	80	178	70	30	127	6 5/8" Reg	6 5/8" Reg	10-2928
273	12.5	1000	230	80	203	50	30	100	6 5/8 Reg	6 5/8 Reg	10-1823
273	12.5	1500	270	80	203	50	30	100	6 5/8 Reg	6 5/8 Reg	10-1835
273	12.5	2000	310	80	203	50	30	100	6 5/8 Reg	6 5/8 Reg	10-1822
273	12.5	3000	391	80	203	50	30	100	6 5/8 Reg	6 5/8 Reg	10-1760
273	12.5	4000	471	80	203	50	30	100	6 5/8 Reg	6 5/8 Reg	10-1836
273	12.5	6000	631	80	203	50	30	100	6 5/8 Reg	6 5/8 Reg	10-1638
273	8.8	1000	236	58	203	50	30	100	4 1/2" Reg	4 1/2" Reg	10-1633
273	8.8	2000	293	58	203	50	30	100	4 1/2" Reg	4 1/2" Reg	10-1588
273	8.8	3000	350	58	203	50	30	100	4 1/2" Reg	4 1/2" Reg	10-1583
273	8.8	6000	546	58	203	50	30	100	4 1/2" Reg	4 1/2" Reg	10-1557
305	16	1000	335	120	265	80	35	190	10" Beco	10" Beco	10-1976
305	16	1000	577	150	350	80	35	230	12" Beco	12" Beco	10-2004
305	16	1000	350	100	265	60	50	190	210 Hex	210 Hex	10-2303
305	16	1500	392	120	265	80	35	190	10" Beco	10" Beco	10-1911
305	16	1500	654	150	350	80	35	230	12" Beco	12" Beco	10-2005
305	16	1500	438	100	265	60	50		210 Hex	210 Hex	10-2299
305	16	1500	420	80	265	80	35	190	6 5/8" Reg	6 5/8" Reg	10-2105
305	16	2000	449	120	265	80	35	190	10" Beco	10" Beco	10-1977
305	16	2000	731	150	350	80	35	230	12" Beco	12" Beco	10-2006
305	16	3000	563	120	265	80	35	190	10" Beco	10" Beco	10-1910
305	16	3000	885	150	350	80	35	230	12" Beco	12" Beco	10-2007
305	16	3000	609	100	265	60	50		210 Hex	210 Hex	10-2300
305	16	3000	564	120	265	80	35		Beco 10"	Beco 10"	10-2196



Driconeq Pipe



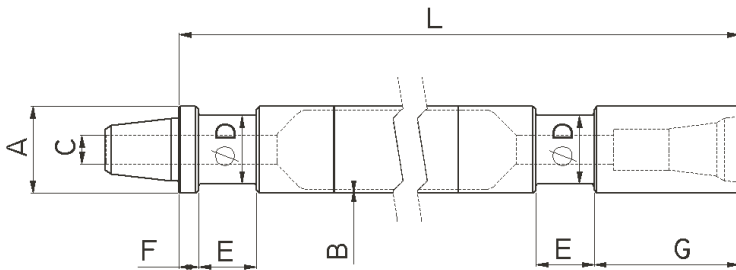
OD A	WT B	Lenght L	Weight Kg	Measurements, mm					Thread Box	Thread Pin	Product No.
A	B	L	Kg	C	D	E	F	G			
305	16	6000	906	120	265	80	35	190	10" Beco	10" Beco	10-1932
305	16	6000	1348	150	350	80	35	230	12" Beco	12" Beco	10-2008
305	16	6000	945	120	265	80	35		210 Hex	210 Hex	10-2301
305	16	10000	1407	100	265	60	50	190	210 Hex	210 Hex	10-2302
324	16	1795	407	80	260	50	30	80	6 5/8" Reg	6 5/8" Reg	10-2297
406	12	1000	387	80	350	80	27	47	6 5/8" Reg	6 5/8" Reg	10-2549
406	12	2000	508	80	350	80	27	47	6 5/8" Reg	6 5/8" Reg	10-2540
406	12	3000	628	80	350	80	27	47	6 5/8" Reg	6 5/8" Reg	10-2281
406	12	3800	728	80	350	80	27	47	6 5/8" Reg	6 5/8" Reg	10-2548
406	12	3800	720	80	350	80	27	47	6 5/8" Reg	6 5/8" Reg	10-2554
406	12	4000	750	80	350	80	27	47	6 5/8" Reg	6 5/8" Reg	10-2552
406	12	5000	598	80	350	80	27	47	6 5/8" Reg	6 5/8" Reg	10-2282
406	12	6000	993	80	350	80	27	47	6 5/8" Reg	6 5/8" Reg	10-2283
406	12	6000	990	120	350	80	27	47	8 5/8" Reg	8 5/8" Reg	10-2677
406	12	7000	1114	80	350	80	27	47	6 5/8" Reg	6 5/8" Reg	10-2553
406	12	7500	1175	80	350	80	27	47	6 5/8" Reg	6 5/8" Reg	10-2550
406	35	2000	870	150	350	60	30	180	Beco 12"	Beco 12"	10-2087



Atlas Copco ROC

OD A	WT B	Lenght L	Weight Kg	Measurements, mm					Thread Box	Thread Pin	Product No.
A	B	L	Kg	C	D	E	F	G			
70	6.3	4000	44	25					GG2"	GG2"	10-2143
76	4.0	2000	20	30					2 3/8" Reg	2 3/8" Reg	10-1665
76	4.0	3000	29	30					2 3/8" Reg	2 3/8" Reg	10-1438
76	4.0	3000	29	30					RD50-6	RD50-6	10-1439
76	4.0	3620	32.5	30					2 3/8" Reg	2 3/8" Reg	10-1449
76	4.0	3660	33	30					2 3/8" Reg	2 3/8" Reg	10-1315
76	4.0	3720	34	30					2 3/8" Reg	2 3/8" Reg	10-1403
76	4.0	4000	37	30					2 3/8" Reg	2 3/8" Reg	10-1227
76	6.3	3000	39	30					2 3/8" Reg	2 3/8" Reg	10-1453
76	6.3	3620	45	30					2 3/8" Reg	2 3/8" Reg	10-1604
76	6.3	3700	47	30					2 3/8" Reg	2 3/8" Reg	10-1404
76	6.3	3720	47	30					2 3/8" Reg	2 3/8" Reg	10-1424
76	6.3	4000	49	30					2 3/8" Reg	2 3/8" Reg	10-1303
76	6.3	5000	58	30					2 3/8" Reg	2 3/8" Reg	10-1302
76	6.3	6000	69	30					2 3/8" Reg	2 3/8" Reg	10-1529

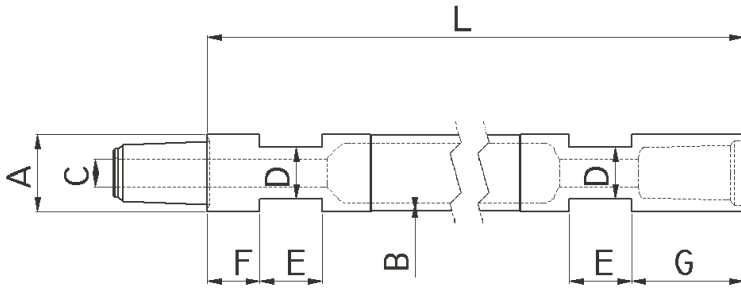
OD A	WT B	Lenght L	Weight Kg	Measurements, mm					Thread Box	Thread Pin	Product No.
				C	D	E	F	G			
76	8.8	4000	62	30					2 3/8" Reg	2 3/8" Reg	10-1650
83	10	4000	79	30					2 3/8" Reg	2 3/8" Reg	10-1844
89	4.0	3000	32	30					2 3/8" Reg	2 3/8" Reg	10-1793
89	4.0	3720	44	30					2 3/8" Reg	2 3/8" Reg	10-1278
89	4.0	4000	46	30					2 3/8" Reg	2 3/8" Reg	10-1276
89	4.0	5000	55	30					2 3/8" Reg	2 3/8" Reg	10-1277
89	6.3	2000	35	43					2 3/8" IF	2 3/8" IF	10-1745
89	6.3	3720	58	30					2 3/8" Reg	2 3/8" Reg	10-1287
89	6.3	4000	62	30					2 3/8" Reg	2 3/8" Reg	10-1338
89	6.3	5000	73	30					2 3/8" Reg	2 3/8" Reg	10-1207
89	6.3	5000	73	38					2 3/8" Reg	2 3/8" Reg	10-1647
89	6.3	6000	90	30					2 3/8" Reg	2 3/8" Reg	10-1694
89	8.8	4000	78	30					2 3/8" Reg	2 3/8" Reg	10-1489
89	8.8	6000	102	43					2 3/8" IF	2 3/8" IF	10-2067
89	8.8	6000	112	30					2 3/8" Reg	2 3/8" Reg	10-1833
102	6.3	4000	66	43					2 3/8" IF	2 3/8" IF	10-1461
102	6.3	5000	81	43					2 3/8" IF	2 3/8" IF	10-1462
102	6.3	5000	81	38					2 7/8" Reg	2 7/8" Reg	10-1266
102	6.3	6000	94	30					2 3/8" Reg	2 3/8" Reg	10-1283
102	6.3	6000	94	37					2 7/8" Reg	2 7/8" Reg	10-1618
114	6.3	6000	120	43					3 1/2" Reg	3 1/2" Reg	10-1238
114	8.8	6000	142	43					3 1/2" Reg	3 1/2" Reg	10-2072
127	6.3	6000	143	43					3 1/2" Reg	3 1/2" Reg	10-1533
140	8.8	6000	196	58					4 1/2" Reg	4 1/2" Reg	10-1834



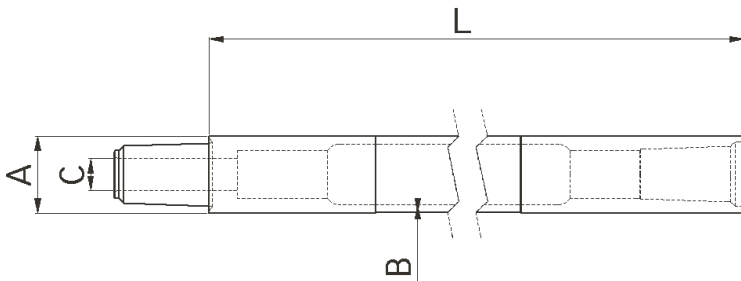
OD A	WT B	Lenght L	Weight Kg	Measurements, mm					Thread Box	Thread Pin	Product No.
				C	D	E	F	G			
89	4.0	1500	20	30	70	60	20	150	2 3/8" Reg	2 3/8" Reg	10-1054
89	4.0	1800	22.5	30	70	60	20	150	2 3/8" Reg	2 3/8" Reg	10-1767
89	4.0	2000	24	30	70	60	20	150	2 3/8" Reg	2 3/8" Reg	10-1285
89	4.0	3000	32	30	70	60	20	150	2 3/8" Reg	2 3/8" Reg	10-1254
89	6.3	1500	24	30	70	60	20	150	2 3/8" Reg	2 3/8" Reg	10-2082



CR Pipe



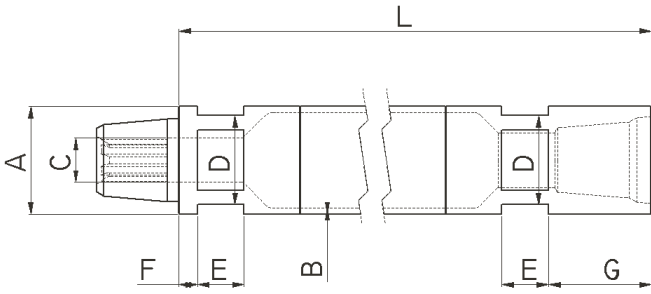
OD A	WT B	Lenght L	Weight Kg	Measurements, mm					Thread Box	Thread Pin	Product No.
				C	D	E	F	G			
44	6.3	1500	9.5	16	36	40	27	60	AWJ	AWJ	10-2174
50	6.3	3000	20.5	22	38	40	28,75	60	CR50	CR50	10-2290
51	5.0	1000	7.5	16	41	40	25	60	AWJ	AWJ	10-2777
51	5.0	2000	13	16	41	40	25	60	AWJ	AWJ	10-2776
54	5.0	500	4.7	19	42	40	27	70	BWJ	BWJ	10-2713
54	5.0	1000	7.5	19	42	40	27	70	BWJ	BWJ	10-2705
54	5.0	1500	10.5	19	42	40	27	70	BWJ	BWJ	10-2175
54	5.0	3000	19.5	19	42	40	27	70	BWJ	BWJ	10-2704
60	6.3	500	7.6	22	40,9	50	42,28	92,62	CR60	CR60	10-2294
60.3	6.3	1000	14	22	40.9	50	43	93	CR60	CR60	10-1856
60.3	6.3	1500	14	22	40.9	50	43	93	CR60	CR60	10-1832
60.3	6.3	3000	30	22	40.9	50	43	93	CR60	CR60	10-1831



OD A	WT B	Lenght L	Weight Kg	Measurements, mm					Thread Box	Thread Pin	Product No.
				C	D	E	F	G			
54	5.0	3000	20	19					BW	BW	10-2354
60	6.3	2000	18.8	25					CR60	CR60	10-2056
60.3	6.3	1000	7	25					CR60	CR60	10-1708
60.3	6.3	1500	14	25					CR60	CR60	10-1709
60.3	6.3	3000	30	25					CR60	CR60	10-1730



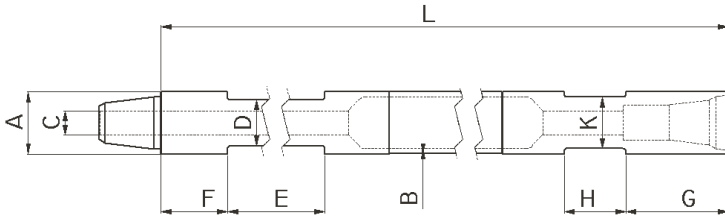
Cubex



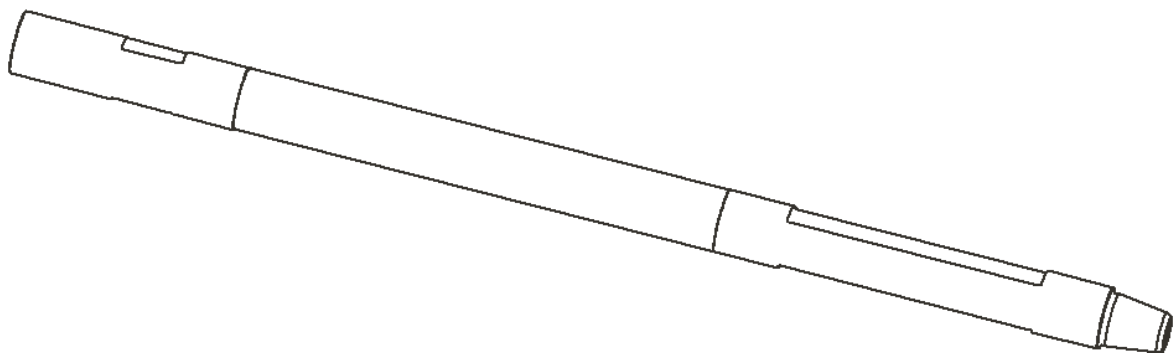
OD	WT	Lenght	Weight	Measurements, mm					Thread	Thread	Product
A	B	L	Kg	C	D	E	F	G	Box	Pin	No.
76	6.3	1828	24.8	43	63,5	76	19	101	#19	#19	10-2263
76	6.3	3000	37	43	63,5	76	19	101	#19	#19	10-2622
76	6.3	3048	38	43	63,5	76	19	101	#19	#19	10-2038
76	6.3	3048	38	37,5	63,5	76	19		#19	#19	10-2606
79	6.3	1220	18	31	63.5	50	20	100	#21	#21	10-1625
79	6.3	1524	21	31	63.5	50	20	100	#21	#21	10-1669
79	6.3	1828	24	31	63.5	50	20	100	#21	#21	10-1265
83	6.3	1828	25	31	63.5	50	20	100	#21	#21	10-1587
89	6.3	1220	22	31	76.2	50	20	100	#21	#21	10-1387
89	6.3	1220	22	36	76.2	50	20	110	#24	#24	10-1678
89	6.3	1525	25	31	76.2	50	20	100	#21	#21	10-1388
89	6.3	1828	28	31	76.2	50	20	100	#21	#21	10-1264
89	6.3	1828	28	36	76.2	50	20	110	#24	#24	10-1270
89	6.3	1828	31	30	73	50	26,5	110	#24	#24	10-2252
96	6.3	3048	48	30	50	50	20	101,6	#25	#25	10-2017
102	12	4877	175	46	88,9	75	25	76	#24	#24	10-2115
102	12	6096	193	46	88,9	75	25	76	#24	#24	10-2110
102	12	6096	193	36	88,9	50	19	114	#24	#24	10-2903
102	6.3	1220	26	36	76.2	50	20	110	#24	#24	10-1389
102	6.3	1525	29	36	76.2	50	20	110	#24	#24	10-1390
102	6.3	1830	41	36	76.2	50	20	110	#24	#24	10-1393
102	8.8	6096	128	46	76,2	50	20	110	#24	#24	10-2092
102	8.8	6096	128	36	76,2	50	20	110	3 1/8"DIBH	3 1/8"DIBH	10-2896
114	12	6096	202	50	58	76	25	102	#28	#28	10-2031
114	6.3	1196	30.4	47	95	50	20	110	#28	#28	10-2298
114	6.3	1220	30	36	95	50	20	110	#28	#28	10-1391
114	6.3	1525	35	36	95	50	20	110	#28	#28	10-1392
114	6.3	1828	40	36	95	50	20	110	#28	#28	10-1804
114	8.8	6096	157	50	95	76	25	102	#28	#28	10-2795
127	6.3	1524	47.2	36	95	50	28	125	#28	#28	10-2522
127	6.3	1830	50	36	95	50	20	110	#28	#28	10-1262



Driltech Gator

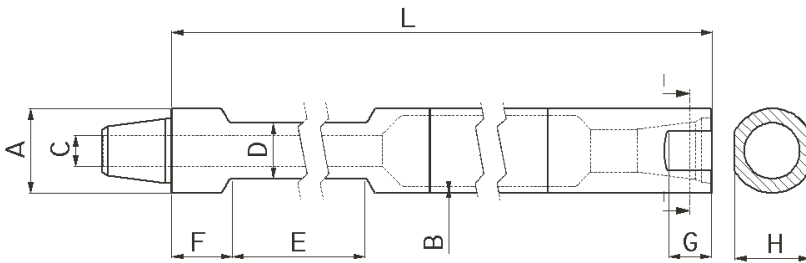


OD A	WT B	Lenght L	Weight Kg	Measurements, mm							Thread Box	Thread Pin	Product No.
A	B	L		C	D	E	F	G	H	K			
76	12.5	7650	154	30	57.15	450	50	150	150	57.15	2 3/8" Reg	2 3/8" Reg	10-1695
76	6.3	2896	42	30	57.15	317.5	82.5	127	76.2	63.5	2 3/8" Reg	2 3/8" Reg	10-1383
76	6.3	3962	54	30	57.15	317.5	82.5	127	76.2	63.5	2 3/8" Reg	2 3/8" Reg	10-1381
89	12.5	7650	187	30	70	450	50	150	150	70	2 3/8" Reg	2 3/8" Reg	10-1434
89	8.0	2896	64	30	69.85	317.5	82.5	127	76.2	69.85	2 3/8" Reg	2 3/8" Reg	10-1626
89	8.0	2896	64	36	69.85	317.5	82.5	127	76.2	69.85	2 7/8" Reg	2 7/8" Reg	10-1698
89	8.0	3505	74	36	69.85	317.5	82.5	127	76.2	69.85	2 7/8" Reg	2 7/8" Reg	10-1733
89	8.0	3962	80	30	69.85	317.5	82.5	127	76.2	69.85	2 3/8" Reg	2 3/8" Reg	10-1627
89	8.0	3962	80	36	69.85	317.5	82.5	127	76.2	69.85	2 7/8" Reg	2 7/8" Reg	10-1635
89	8.0	6096	111	43	69.85	317.5	82.5	127	76.2	69.85	2 3/8" IF	2 3/8" IF	10-1460
102	8.8	2896	81	36	69.85	317.5	82.5	127	76.2	88.9	2 7/8" Reg	2 7/8" Reg	10-1628
102	8.8	3962	101	43	69.85	317.5	82.5	127	76.2	88.9	2 3/8" IF	2 3/8" IF	10-1806
102	8.8	3962	101	36	69.85	317.5	82.5	127	76.2	88.9	2 7/8" Reg	2 7/8" Reg	10-1629
114	8.8	2896	87	43	76.2	317.5	82.5	127	76.2	101.6	3 1/2" Reg	3 1/2" Reg	10-1630
114	8.8	3962	121	43	76.2	317.5	82.5	127	76.2	101.6	3 1/2" Reg	3 1/2" Reg	10-1631
114	8.8	7650	189	38	80	450	50	150	150	80	Beco 3"	Beco 3"	10-1422

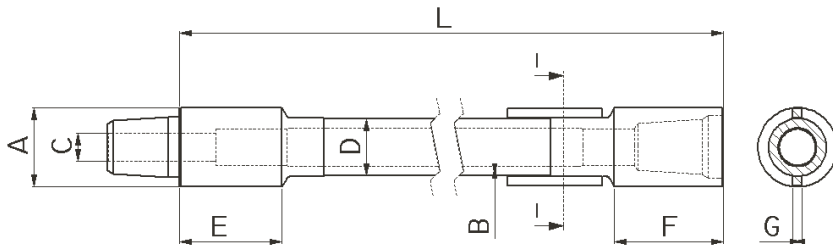




Driltech T25KW/D25/40

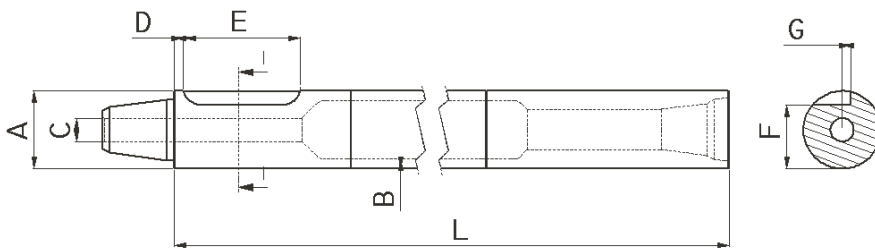
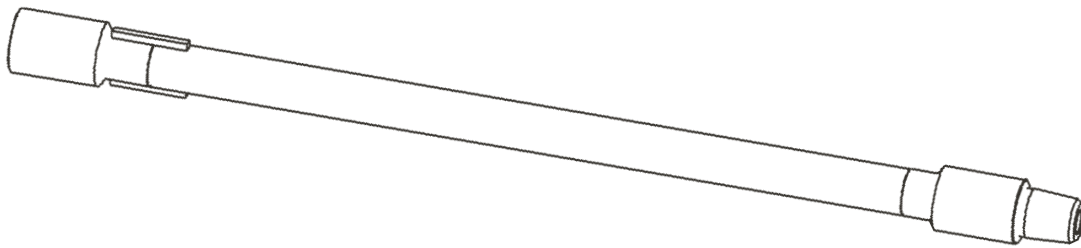


OD A	WT B	Lenght L	Weight Kg	Measurements, mm						Thread Box	Thread Pin	Product No.
A	B	L		C	D	E	F	G	H			
89	12.5	9144	240	43	69.85	317.5	82.5	57.15	82.55	2 3/8" IF	2 3/8" IF	10-1563
89	8.0	6010	110	43	69.85	317.5	82.5	57.15	82.55	2 3/8" IF	2 3/8" IF	10-1616
89	8.0	6096	110	43	69.85	317.5	82.5	57.15	82.55	2 3/8" IF	2 3/8" IF	10-1643
102	12	7620	222	36	69,85	317,5	82,5	60,15	88,9	2 7/8" Reg	2 7/8" Reg	10-2096
102	12	9144	222	36	69,85	317,5	82,5	60,15	88,9	2 7/8" Reg	2 7/8" Reg	10-2563
102	8.8	6010	140	43	69,85	317,5	82,5	57,15	88,9	2 3/8" IF	2 3/8" IF	10-2033
102	8.8	6010	38	36	69,85	317,5	82,5	57,15	88,9	2 3/8" IF DS	2 3/8" IF DS	10-2575
102	8.8	9144	202	43	69,85	317,5	82,5	57,15	88,9	2 3/8" IF	2 3/8" IF	10-2041
114	12	9144	310	43	76,2	317,5	82,5	57,15	101,6	3 1/2" Reg	3 1/2" Reg	10-2521
114	12	9144	305	32	76,2	317,5	82,55	60	101,6	Beco 3"	Beco 3"	10-2919
114	19	7620	365	43	76.2	317.5	82.5	60	101.6	3 1/2" Reg	3 1/2" Reg	10-1800
114	12.5	6553	222	43	76.2	317.5	82.5	60	101.6	3 1/2" Reg	3 1/2" Reg	10-1493
114	12.5	7620	231	43	76.2	317.5	82.5	60	101.6	3 1/2" Reg	3 1/2" Reg	10-1494
114	12.5	9144	279	43	76.2	317.5	82.5	60	101.6	3 1/2" Reg	3 1/2" Reg	10-1808
114	8.8	6000	156	43	76.2	317.5	82.5	60	101.6	3 1/2" Reg	3 1/2" Reg	10-1412
114	8.8	6010	157	43	76.2	317.5	82.5	60	101.6	3 1/2" Reg	3 1/2" Reg	10-1559
114	8.8	6096	157	53	76.2	317.5	82.5	60	101.6	2 7/8" IF	2 7/8" IF	10-1714
114	8.8	6096	157	43	76.2	317.5	82.5	60	101.6	3 1/2" Reg	3 1/2" Reg	10-1512
114	8.8	7620	196	53	76.2	317.5	82.5	60	101.6	2 7/8" IF	2 7/8" IF	10-1458
114	8.8	7620	196	43	76.2	317.5	82.5	60	101.6	3 1/2" Reg	3 1/2" Reg	10-1423
114	8.8	9140	230	43	76.2	317.5	82.5	60	101.6	3 1/2" Reg	3 1/2" Reg	10-1597
114	8.8	9144	230	53	76.2	317.5	82.5	60	101.6	2 7/8" IF	2 7/8" IF	10-2351
114	8.8	9144	234	43	76,2	317,5	82,55	60	101,6	Beco 3"	Beco 3"	10-2171
127	12	6096	245	43	76,2	381,72	82,5	60	101,6	3 1/2" Reg	3 1/2" Reg	10-2040
127	12	7620	301	38	76,2	377,0	53	60	117,5	3 1/2" Beco	3 1/2" Beco	10-2501
127	12	9144	355	38	76,2	377,0	53	60	117,5	3 1/2" Beco	3 1/2" Beco	10-2036
127	20	6553	360	43	76.2	317.5	82.5	60	101.6	3 1/2" Reg	3 1/2" Reg	10-1799
127	20	7620	422	38	76.2	317.5	82.5	60	117.5	3 1/2" Beco	3 1/2" Beco	10-1748
127	20	9144	500	38	76,2	377,0	53	60	117,5	3 1/2" Beco	3 1/2" Beco	10-2295
127	20	9144	500	43	76.2	317.5	82.5	60	101.6	3 1/2" Reg	3 1/2" Reg	10-1600
127	12.5	7620	315	43	76.2	317.5	82.5	60	101.6	3 1/2" Reg	3 1/2" Reg	10-1746
127	12.5	9144	352	43	76.2	317.5	82.5	60	101.6	3 1/2" Reg	3 1/2" Reg	10-1747
140	12	9144	410	38	76,2	377,0	53	107,95	117,35	3 1/2" Beco	3 1/2" Beco	10-2664
140	12	9144	402	43	76,2	377,0	53	57,15	101,6	3 1/2" Reg	3 1/2" Reg	10-2546
140	19	7620	476	38	76,2	377,0	53	107,95	117,35	3 1/2" Beco	3 1/2" Beco	10-2061
140	19	9144	566	38	76,2	377,0	53	107,95	117,35	3 1/2" Beco	3 1/2" Beco	10-2060
140	20	7620	474	38	76.2	317.5	82.5	60	117.5	3 1/2" Beco	3 1/2" Beco	10-1749
140	20	9144	563	38	76.2	317.5	82.5	60	117.5	3 1/2" Beco	3 1/2" Beco	10-1801
178	19	9144	882	58	101,6	311,15	93	54,65	139,7	4 1/2" Beco	4 1/2" Beco	10-2374
194	35	10600	1496	75	152,4	304,8	101,6	107,95	177,8	6" Beco	6" Beco	10-2523
219	25	10668	1396	75	177,8	304,8	101,6	155	196,85	6" Beco	6" Beco	10-2601



FEDP/LUGS

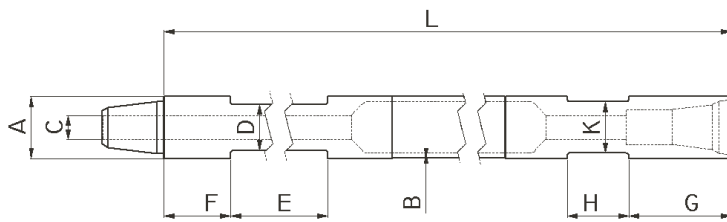
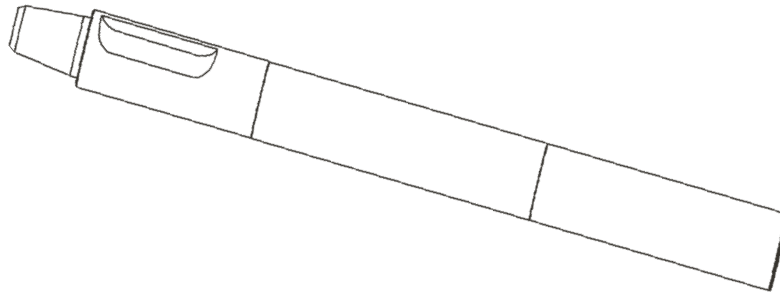
OD A	WT B	Length L	Weight Kg	Measurements, mm					Thread Box	Thread Pin	Product No.
				C	D	E	F	G			
60	6.3	6096	53	32	60,3	165	164	6	2 3/8" May JR	2 3/8" May JR	10-2112
83	10	4572	62	30	60	115	108	10	2 3/8" May JR	2 3/8" May JR	10-1490
95	6.3	6000	78	43	73,1	203	203	10	2 3/8" IF	2 3/8" IF	10-2701
108	6.3	6000	96	53	89	203	203	10	2 7/8" IF	2 7/8" IF	10-2702



Hausherr

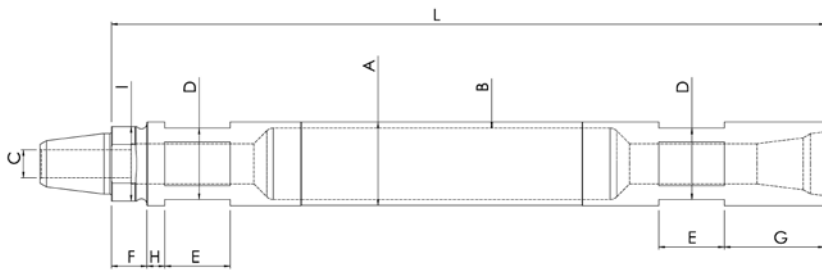
OD A	WT B	Length L	Weight Kg	Measurements, mm					Thread Box	Thread Pin	Product No.
				C	D	E	F	G			
70	6.3	4000	44	25	10	132,0	61,3	5	GG 2"	GG 2"	10-2121
70	8.8	3000	43	20	10	140,0	57,3	10	Haus	Haus	10-2469
70	8.8	4000	68	20	10	140,0	57,3	10	Haus	Haus	10-2151
76	6.3	4000	51	25	10	135,0	64,1	12,5	Haus	Haus	10-1487
76	6.3	6000	73	25	10	135,0	64,1	12,5	Haus	Haus	10-1396
76	8.8	3000	62.5	30	10	135,0	64,35	12,5	2 3/8" Reg	2 3/8" Reg	10-2508
76	8.8	3000	48	25	10	135,0	64,35	12,5	2 3/8" Reg	2 3/8" Reg	10-2254
76	8.8	4000	62.5	30	10	135,0	64,35	12,5	2 3/8" Reg	2 3/8" Reg	10-2152
76	8.8	4000	63	25	10	135,0	64,1	12,5	Haus	Haus	10-1097
76	8.8	5000	81	25	10	135,0	64,35	12,5	2 3/8" Reg	2 3/8" Reg	10-2156
76	8.8	6000	96	25	10	135,0	64,1	12,5	Haus	Haus	10-1098
83	12	4000	92	25	10	125,0	68,05	8,75	2 3/8" Reg	2 3/8" Reg	10-2098
83	9.5	3000	62	30	10	125,0	67,75	8,75	2 3/8" Reg	2 3/8" Reg	10-1696
83	9.5	4000	79	30	10	125,0	67,75	8,75	2 3/8" Reg	2 3/8" Reg	10-1697
83	9.5	6000	115	25	10	125,0	68,05	8,75	2 3/8" Reg	2 3/8" Reg	10-2074
83	9.5	7000	133	30	10	125,0	67,75	8,75	2 3/8" Reg	2 3/8" Reg	10-1720

OD A	WT B	Lenght L	Weight Kg	Measurements, mm					Thread Box	Thread Pin	Product No.
				C	D	E	F	G			
89	10	1500	37	30	10	125,0	70,75	12,5	2 3/8" Reg	2 3/8" Reg	10-2358
89	10	4000	89	30	10	125,0	70,75	12,5	2 3/8" Reg	2 3/8" Reg	10-2277
89	12.5	6000	142	30	12	130,0	76,2	0	2 3/8" Reg	2 3/8" Reg	10-1237
89	6.3	4000	62	30	12	130,0	76,2	0	2 3/8" Reg	2 3/8" Reg	10-1507
89	8.8	3000	57.5	30	12	130,0	76,5	31,54	2 3/8" Reg	2 3/8" Reg	10-2018
89	8.8	4000	73	30	12	130,0	76,5	31,54	2 3/8" Reg	2 3/8" Reg	10-2605
89	8.8	5000	89	30	12	130,0	76,5	31,54	2 3/8" Reg	2 3/8" Reg	10-2566
89	8.8	6000	105	30	10	125,0	70,75	12,5	2 3/8" Reg	2 3/8" Reg	10-2623
102	8.8	4000	93	36	10	140,0	89,8	0	2 7/8" Reg	2 7/8" Reg	10-1766
114	8.8	3000	85	43	18	135,0	104,3	0	3 1/2" Reg	3 1/2" Reg	10-2278
114	8.8	6000	154	43	18	135,0	104,3	0	3 1/2" Reg	3 1/2" Reg	10-1846
127	8.8	6000	172.6	43	13	134,0	104,3	0	3 1/2" Reg	3 1/2" Reg	10-2483
89	12	9144	223	30	63,5	152,4	25	127	2 3/8" Reg	2 3/8" Reg	10-2387



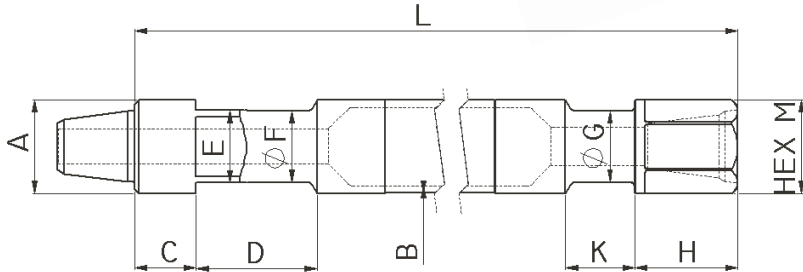
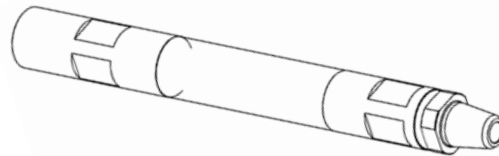
IR DM25

OD A	WT B	Lenght L	Weight Kg	Measurements, mm					Thread Box	Thread Pin	Product No.
				C	D	E	F	G			
89	8.8	7620	143	30	63,5	152,4	25	127	2 3/8" Reg	2 3/8" Reg	10-2386
102	19	6400	176	36	88,9	102	50	127	2 7/8" Reg	2 7/8" Reg	10-2416
102	8.8	6400	142	36	88,9	102	50	127	2 7/8" Reg	2 7/8" Reg	10-2388
102	8.8	6400	142	36	88,9	152,4	25	114,3	2 7/8" Reg	2 7/8" Reg	10-2415
102	8.8	7620	186	36	88,9	152,4	25	114,3	2 7/8" Reg	2 7/8" Reg	10-2414
76	6.3	3048	38	30	57,15	40	22	115	2 3/8" Reg	2 3/8" Reg	10-2410



IR CM (695/760/780)

OD A	WT B	Lenght L	Weight Kg	Measurements, mm							Thread Box	Thread Pin	Product No.
				C	D	E	F	G	H	I			
89	6.3	3000	48	30	76,2	70	38	108	19	79,5	2 3/8" Reg	2 3/8" Reg	10-2085
89	6.3	4000	40	30	70	70	38	108	19	79,5	2 1/2" Z	2 1/2" Z	10-2595
89	6.3	4000	61	30	76,2	70	38	108	19	79,5	2 3/8" Reg	2 3/8" Reg	10-2086
89	8.8	2700	60	30	79,8	43					2 3/8" Reg	2 1/2" Z	10-2411
102	6.3	5000	82	30	76,2	50/70	38	20	19	85	2 1/2" Z	2 1/2" Z	10-2624
102	8.8	2700	65	30	76,2	50/70	38	128	19	85	3 1/2" Reg	2 1/2" Z	10-2626



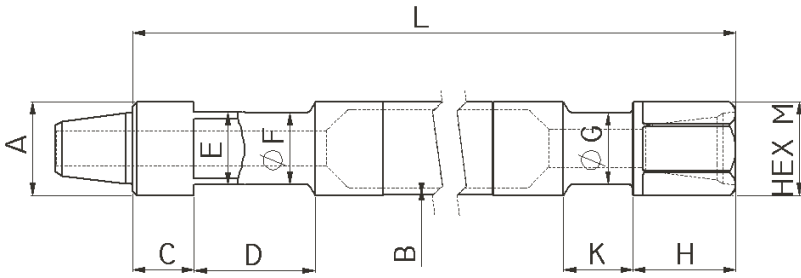
IR T4

OD A	WT B	Lenght L	Weight Kg	Measurements, mm								Thread Box	Thread Pin	Product No.
				C	D	E	F	G	H	K	M			
102	19	8077	236	76,2	149,05	88,9	88,5	88,9	134,5		102,2	2 7/8" Reg	2 7/8" Reg	10-2390
102	19	9144	341	76.2	149	88.9	88.9	88.9	127	95.25	88.9	2 7/8" Reg	2 7/8" Reg	10-1988
102	8.8	7620	166	76.2	149	88.9	82.55	88.9	127	95.25	88.9	2 7/8" Reg	2 7/8" Reg	10-1980
102	8.8	7620	191	76,2	149,05	88,9	88,5	88,5	127	95,25	88,9	2 7/8" Reg	2 7/8" Reg	10-2413
102	8.8	9144	198	76.2	149	88.9	88.9	88.9	127	95.25	88.9	2 7/8" Reg	2 7/8" Reg	10-1989
114	12	10668	347	76,2	149,23	88,9	88,9	88,9	127	85,73	101	3 1/2" Reg	3 1/2" Reg	10-2332
114	19	7620	378	76.2	149	88.9	88.9	88.9	127	85.73	101.6	3 1/2" Reg	3 1/2" Reg	10-1660
114	19	7620	393	76,2	149,23	88,9	88	88	127	85,73	101	3 1/2" Reg	3 1/2" Reg	10-2899
114	19	9144	449	76.2	149	88.9	88.9	88.9	127	85.73	101.6	3 1/2" Reg	3 1/2" Reg	10-1657
114	12.5	9144	303	76.2	149	88.9	88.9	88.9	127	85.73	101.6	3 1/2" Reg	3 1/2" Reg	10-1515
114	8.8	6096	151	76.2	149	88.9	88.9	88.9	127	85.73	101.6	2 7/8" IF	2 7/8" IF	10-1981
114	8.8	6096	151	76.2	149	88.9	88.9	88.9	127	85.73	101.6	3 1/2" Reg	3 1/2" Reg	10-1620
114	8.8	7620	187	76.2	149	88.9	88.9	88.9	127	85.73	101.6	2 7/8" IF	2 7/8" IF	10-1357
114	8.8	7620	187	130,67	149,23	88,9	88	88	127	85,73	101	2 7/8" IF	2 7/8" IF	10-2420
114	8.8	7620	187	76.2	149	88.9	88.9	88.9	127	85.73	101.6	3 1/2" Reg	3 1/2" Reg	10-1228
114	8.8	9144	223	76.2	149	88.9	88.9	88.9	127	85.73	101.6	2 7/8" IF	2 7/8" IF	10-1712
114	8.8	9144	223	76.2	149	88.9	88.9	88.9	127	85.73	101.6	3 1/2" Reg	3 1/2" Reg	10-1841

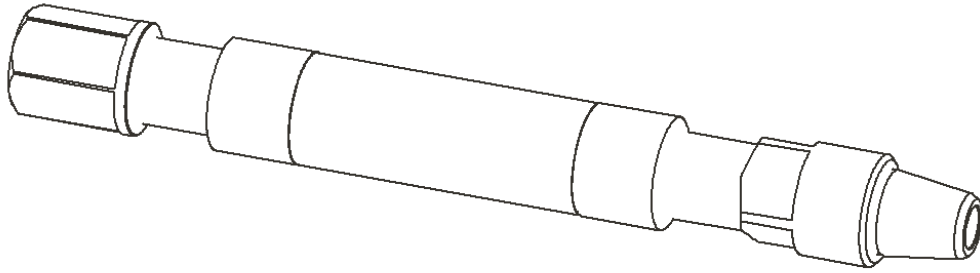
OD A	WT B	Lenght L	Weight Kg	Measurements, mm								Thread Box	Thread Pin	Product No.
				C	D	E	F	G	H	K	M			
114	8.8	9144	222	76,2	149,23	88,9	88	88	127	85,73	101	Beco 3"	Beco 3"	10-2534
127	12	6553	250	76	149,43	88,9	88,9	88,9	127	85,73	120,65	3 1/2" Beco	3 1/2" Beco	10-2424
127	12	7620	297	76	149,43	88,9	88,9	88,9	127	89	117,47	3 1/2" Beco	3 1/2" Beco	10-2346
127	12	7620	297	76,2	59,8	88,9	88,9	88,9	127	88,9	101,6	3 1/2" Beco	3 1/2" Beco	10-2562
127	12	8077	260	76	149,43	88,9	88,9	88,9	127		120,65	3 1/2" Beco	3 1/2" Beco	10-2394
127	12	9144	353	76	149,43	88,9	88,9	88,9	127		117,47	3 1/2" Beco	3 1/2" Beco	10-2327
127	12	9144	350	76,2	153,6	88,9	88,9	88,9	127	88,9	101,6	3 1/2" Beco	3 1/2" Beco	10-2488
127	12	10668	405	76	149,43	88,9	88,9	88,9	127	89	117,47	3 1/2" Beco	3 1/2" Beco	10-2322
127	12	10668	397	76,2	153,6	88,9	88,9	88,9	127	89	101,6	3 1/2" Reg	3 1/2" Reg	10-2320
127	19	7620	355	76	95,25	88,9	88,9	88,9	127	89	117,47	3 1/2" Beco	3 1/2" Beco	10-2347
127	19	7620	410	76,2	153,8	88,9	82,55	88,9	127	89	101,6	3 1/2" Reg	3 1/2" Reg	10-1682
127	19	8077	445	76,2	138,96	88,9	88,9	88,9	127	63,5	127,6	3 1/2" Reg	3 1/2" Reg	10-2326
127	19	8992	493	76,2	138,96	88,9	88,9	88,9	127	63,5	127,6	3 1/2" Reg	3 1/2" Reg	10-2342
127	19	9144	503	76	134	88,9	88,9		114,3	80		3 1/2" Beco	3 1/2" Beco	10-2114
127	19	9144	498	76	95,25	88,9	88,9	88,9	127	89	117,47	3 1/2" Beco	3 1/2" Beco	10-2328
127	19	9144	491	76,2	153,8	88,9	82,55	88,9	127	89	101,6	3 1/2" Reg	3 1/2" Reg	10-1683
127	19	9601	526	76,2	138,96	88,9	88,9	88,9	127	63,5	127,6	3 1/2" Reg	3 1/2" Reg	10-2341
127	19	10668	580	76	95,25	88,9	88,9	88,9	127	89	117,47	3 1/2" Beco	3 1/2" Beco	10-2323
127	19	10668	574	76,2	138,96	88,9	88,9	88,9	127	89	101,6	3 1/2" Reg	3 1/2" Reg	10-2321
127	12.5	7620	286	76,2	153,8	88,9	82,55	88,9	127	89	101,6	3 1/2" Reg	3 1/2" Reg	10-1593
127	12.5	9144	343	76,2	153,8	88,9	82,55	88,9	127	89	101,6	3 1/2" Reg	3 1/2" Reg	10-1685
127	8.8	6553	210	76,2	153,8	88,9	88,9	88,9	127	63	x	3 1/2" Reg	3 1/2" Reg	10-2393
127	8.8	7620	341	76,2	153,8	88,9	82,55	101,6	127	89	101,6	3 1/2" Reg	3 1/2" Reg	10-1882
127	8.8	7620	255	76,2	153,8	88,9	88,9	88,9	127	89	101,6	3 1/2" Reg	3 1/2" Reg	10-2029
127	8.8	7772	258	76,2	153,8	88,9	88,9	88,9	134	76	120,65	3 1/2" Beco	3 1/2" Beco	10-2095
127	8.8	9144	294	76,2	153,8	88,9	88,9	88,9	127	89	117,47	3 1/2" Beco	3 1/2" Beco	10-2094
127	8.8	9144	380	76,2	153,8	88,9	88,9	88,9	127	89	101,6	3 1/2" Reg	3 1/2" Reg	10-1681
140	12	6299	282	76,2	149,4	114,3	114,32-W	114,3	127	63,5		3 1/2" Beco	3 1/2" Beco	10-2396
140	12	7620	333	76,2	149,23	114,3	114,3	114,3	127	174,63	127	4" FH (NC40)	4" FH (NC40)	10-2425
140	12	7823	311	76,2	149,4	114,3	114,3	114,3	127	63,5		3 1/2" Beco	3 1/2" Beco	10-2395
140	12	9144	474	76,2	149,4	114,3	114,3	114,3	127	85,73	127	3 1/2" Beco	3 1/2" Beco	10-2661
140	12	10668	455	76,2	149,4	114,3	114,3	114,3	127	85,73	127	3 1/2" Beco	3 1/2" Beco	10-2324
140	19	7620	474	76,2	149,3	114,3	114,3	114,3	127	86	127	3 1/2" Beco	3 1/2" Beco	10-1765
140	19	7620	474	76,2	149,3	114,3	114,3	114,3	127	86	127	4" FH	4" FH	10-1984
140	19	9144	563	76,2	149,3	114,3	114,3	114,3	127	86	127	3 1/2" Beco	3 1/2" Beco	10-1810
140	19	9144	474	76,2	149,3	114,3	114,3	114,3	127	86	127	4" FH	4" FH	10-1987
140	19	10668	651	76,2	149,4	114,3	114,3	114,3	127	74,73	127	3 1/2" Beco	3 1/2" Beco	10-2325
140	25	7620	555	76,2	149,4	114,3	114,3	114,3	127		127	3 1/2" Beco	3 1/2" Beco	10-2314
140	25	9144	663	76,2	149,4	114,3	114,3	114,3	127		127	3 1/2" Beco	3 1/2" Beco	10-2329
140	12.5	7620	333	76,2	149,3	114,3	114,3	114,3	127	86	127	3 1/2" Beco	3 1/2" Beco	10-1982
140	12.5	7620	333	76,2	149,3	114,3	114,3	114,3	127	86	127	4" FH	4" FH	10-1983
140	12.5	9144	393	76,2	149,3	114,3	114,3	114,3	127	86	127	3 1/2" Beco	3 1/2" Beco	10-1985
140	12.5	9144	393	76,2	149,3	114,3	114,3	114,3	127	86	127	4" FH	4" FH	10-1986
159	12	6299	339	69,85	155,58	114,3	114,3	114,3	127	76,2	159	4" Beco	4" Beco	10-2397
159	12	7620	394	95,25	130,18	114,3	114,3	114,3	114,3	80	127	4" Beco	4" Beco	10-2319
159	12	7823	408	69,85	155,58	114,3	114,3	114,3	127	76,2	159	4" Beco	4" Beco	10-2398
159	12	9144	460	70	155,43	114,3	107,95	114,3	114,3	80	127	4" Beco	4" Beco	10-2371
159	19	7823	567	70	155,6	114,3	114,3	114,3	127	76,2	127	4" Beco	4" Beco	10-2337
159	19	9144	657	70	155,6	114,3	114,3	114,3	127	76,2	127	4" Beco	4" Beco	10-2336
159	19	10668	762	70	155,6	114,3	114,3	114,3	127	76,2	127	4" Beco	4" Beco	10-2338
178	12	7620	473	76,2	174,63	127	152,4	127	127	101,6	152,4	4 1/2" Beco	4 1/2" Beco	10-2403
178	12	9144	545	76,2	174,63	127	127	127	127	101,6	152,4	4 1/2" Beco	4 1/2" Beco	10-2404
178	12	9347	547	76,2	174,63	114,3	114,3			88,9	152,4	4 1/2" Beco	4 1/2" Beco	10-2399
178	12	10668	623	76,2	174,63	127	152,4	127	127	101,6	152,4	4 1/2" Beco	4 1/2" Beco	10-2405
178	19	7620	640	76,2	174,63	127	127		127	127	152,4	4 1/2" Beco	4 1/2" Beco	10-2313
178	19	7620	655	76	120,65	152,4	152,4		127		165,1	4 1/2" Beco	4 1/2" Beco	10-2402



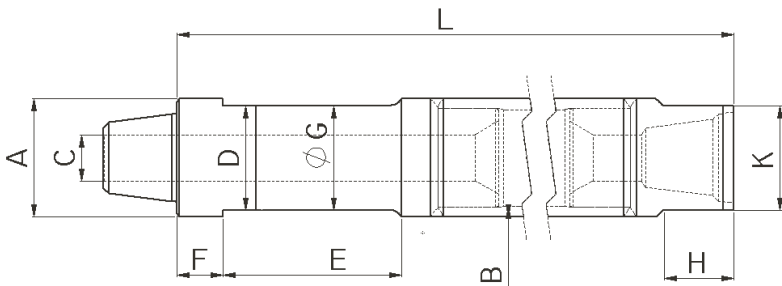
IR T4



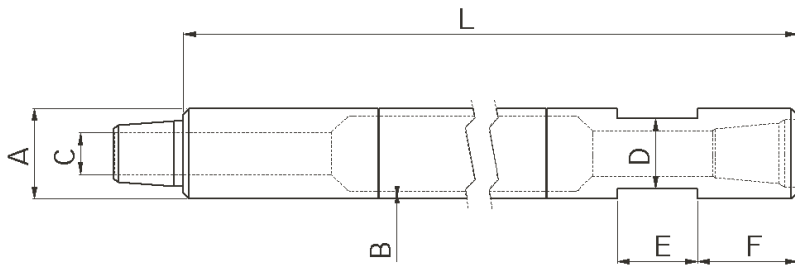
OD A	WT B	Lenght L	Weight Kg	Measurements, mm								Thread Box	Thread Pin	Product No.
				C	D	E	F	G	H	K	M			
178	19	9144	773	76	120,65	152,4	152,4		127		165,1	4 1/2" Beco	4 1/2" Beco	10-2401
178	19	9144	759	76,2	174,63	127	127		127	127	152,4	4 1/2" Beco	4 1/2" Beco	10-2330
178	19	10668	883	76,2	174,63	127	127		127	127	152,4	4 1/2" Beco	4 1/2" Beco	10-2340
194	12	6096	429	71	184,5	152,4	127	152,4	127	100	165,1	4 1/2" Beco	4 1/2" Beco	10-2443
194	12	7620	514	71	184,5	152,4	127	152,4	127	100	165,1	4 1/2" Beco	4 1/2" Beco	10-2441
194	12	9144	599	71	184,5	152,4	127	152,4	127	100	165,1	4 1/2" Beco	4 1/2" Beco	10-2442
194	19	7620	713	76,2	179,3	152,4	127	152,4	127	100	165,1	5 1/4" Beco	5 1/4" Beco	10-2407
194	19	7620	776	76,2	179,3		159,2		127		165,1	5 1/4" Beco	5 1/4" Beco	10-2435
194	19	9144	843	76,2	179,3	127	152,4	152,4	127	100	165,1	5 1/4" Beco	5 1/4" Beco	10-2436
194	19	10668	974	76,2	179,3	152,4	127	152,4	127	100	165,1	5 1/4" Beco	5 1/4" Beco	10-2535



IR Pipe

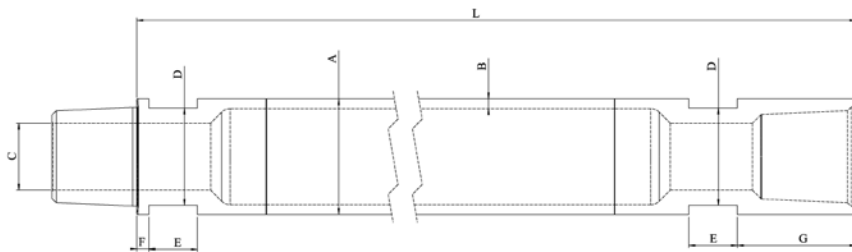
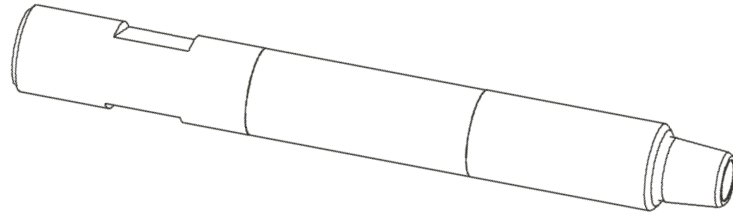


OD A	WT B	Lenght L	Weight Kg	Measurements, mm							Thread Box	Thread Pin	Product No.
				C	D	E	F	G	H	K			
178	16	10668	735	58	146,05	298,45	50,8	146,05	114,3	146,05	4 1/2" Beco	4 1/2" Beco	10-2427
194	19	2438	284	76	171,45	127	76,2	171,45	165,1	171,45	5 1/4" Beco	5 1/4" Beco	10-2444
194	19	9144	767	76	171,45	294,85	76,2	171,45	114,3	171,45	5 1/4" Beco	5 1/4" Beco	10-1905
194	19	9982	839	76	171,45	294,85	76,2	171,45	114,3	171,45	5 1/4" Beco	5 1/4" Beco	10-1940
194	19	10688	891	76	171,45	294,85	76,2	171,45	114,3	171,45	5 1/4" Beco	5 1/4" Beco	10-1893
194	19	13716	1244	76	171,45	273	76,2	171,45	114,3	171,45	5 1/4" Beco	5 1/4" Beco	10-2445
194	25	7620	692	70	171,45	336,55	76,2	171,45	165,1	171,45	5 1/4" Beco	5 1/4" Beco	10-2440
194	25	9144	923	76	171,45	294,85	76,2	171,45	114,3	171,45	5 1/4" Beco	5 1/4" Beco	10-1979
194	25	9982	1093	70	171,45	273,05	76,2	171,45	114,3	171,45			10-2348
194	25	12192	1463	70	171,45	336,55	76,2	171,45	165,1	171,45	5 1/4" Beco	5 1/4" Beco	10-2335



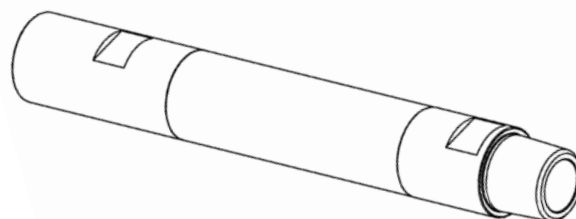
IR TH60

OD A	WT B	Lenght L	Weight Kg	Measurements, mm				Thread Box	Thread Pin	Product No.
				C	D	E	F			
89	8.8	6096	104	43	69.85	101.6	127	2 3/8" IF	2 3/8" IF	10-1281
114	8.8	6096	161	53	88.9	101.6	127	2 7/8" IF	2 7/8" IF	10-1713
114	8.8	6096	161	58	88.9	101.6	127	3 1/2" FH	3 1/2" FH	10-1544
114	8.8	6096	161	58	88.9	101.6	127	3 1/2" IF	3 1/2" IF	10-1742
114	8.8	6096	161	43	88.9	101.6	127	3 1/2" Reg	3 1/2" Reg	10-1707
114	8.8	6096	156	43	88,9	102	127	3 1/2" Reg	3 1/2" Reg	10-2419
178	8.8	6096	156	58	88,9	102	127	3 1/2" IF	3 1/2" IF	10-2417



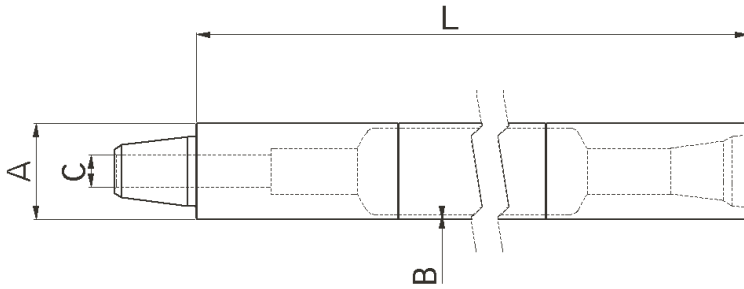
Nordmeyer

OD A	WT B	Lenght L	Weight Kg	Measurements, mm					Thread Box	Thread Pin	Product No.
				C	D	E	F	G			
95	8.0	1000	26	55	80	40	10	100	Nordmeyer	Box 2 3/8" Reg	10-2838
95	8.0	1000	26	55	80	40	10	100	Nordmeyer	Nordmeyer	10-2768
95	8.0	1000	25.5	55	80	40	10	100	Nordmeyer	Box 2 3/8" Reg	10-2839
95	8.0	1500	31	55	80	40	10	100	Nordmeyer	Nordmeyer	10-2926
95	8.0	1700	34.5	55	80	40	10	100	Nordmeyer	Nordmeyer	10-2767
95	8.0	1800	36.2	55	80	40	10	100	Nordmeyer	Nordmeyer	10-2925
95	8.0	1900	37.5	55	80	40	10	100	Nordmeyer	Nordmeyer	10-2924
95	8.0	2000	39.3	55	80	40	10	100	Nordmeyer	Nordmeyer	10-2680

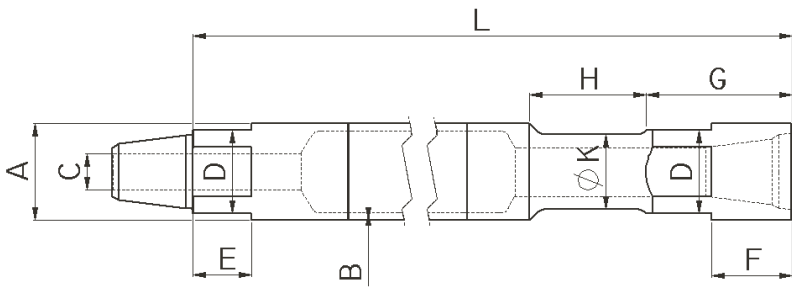




Sandvik BPI

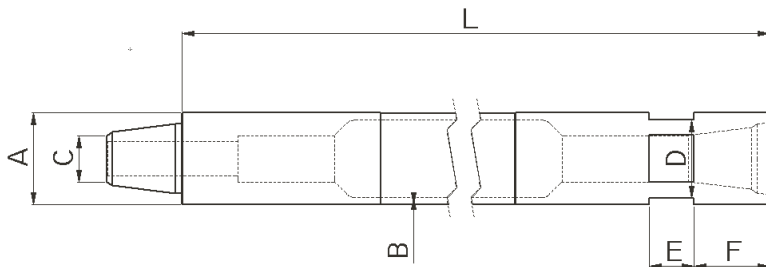
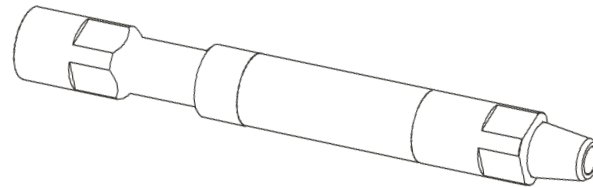


OD A	WT B	Lenght L	Weight Kg	Measurements, mm					Thread Box	Thread Pin	Product No.
				C	D	E	F	G			
60	6.3	4000	36,5	30					RD50-6	RD50-6	10-506742
70	4.0	4000	31	25					GG2"	GG2"	10-686824
70	4.0	4000	34	25					GG2"	GG2"	10-686824
76	4.0	3000	31	30					2 3/8" Reg	2 3/8" Reg	10-688900
76	4.0	3720	28	30					2 3/8" Reg	2 3/8" Reg	10-1668
76	4.0	4000	33.5	30					2 3/8" Reg	2 3/8" Reg	10-2107
76	6.3	3720	45	30					2 3/8" Reg	2 3/8" Reg	10-780536
76	6.3	4000	46	30					2 3/8" Reg	2 3/8" Reg	10-686408
76	6.3	4000	54,5	30					2 3/8" Reg	2 3/8" Reg	10-508616
76	6.3	5000	58	30					2 3/8" Reg	2 3/8" Reg	10-686990
76	6.3	5000	65	30					2 3/8" Reg	2 3/8" Reg	10-508618
76	8.8	6000	93	25					GG2"	GG2"	10-1510
89	4.0	4000	46	30					2 3/8" Reg	2 3/8" Reg	10-686310
89	4.0	4000	54	30					2 3/8" Reg	2 3/8" Reg	10-508617
89	6.3	5000	55	30					2 3/8" Reg	2 3/8" Reg	10-686409
89	6.3	5000	75,5	30					2 3/8" Reg	2 3/8" Reg	10-686409
89	6.3	5000	82	30					2 3/8" Reg	2 3/8" Reg	10-508619
89	6.3	6000	83	43					2 3/8" IF	2 3/8" IF	10-1741
89	6.3	6000	95	30					2 3/8" Reg	2 3/8" Reg	10-505952
89	8.0	6000	110	30					2 3/8" Reg	2 3/8" Reg	10-671706
89	8.0	6000	109	43					2 3/8" Reg	2 3/8" Reg	10-670239
102	6.3	5000	85	36					2 3/8" Reg	2 3/8" Reg	10-502702
102	6.3	5000	98	36					2 7/8" Reg	2 7/8" Reg	10-508620
102	6.3	6000	112	36					2 7/8" Reg	2 7/8" Reg	10-506339
114	6.3	4000	76	43					3 1/2" Reg	3 1/2" Reg	10-508367
114	6.3	5000	103	30					2 3/8" Reg	2 3/8" Reg	10-500677
114	6.3	5000	115	43					3 1/2" Reg	3 1/2" Reg	10-508621
114	6.3	6000	132	43					3 1/2" Reg	3 1/2" Reg	10-505147
114	8.8	4800	100	43					GG 3 1/2"	GG 3 1/2"	10-671272
127	6.3	6000	154	43					3 1/2" Reg	3 1/2" Reg	10-505190



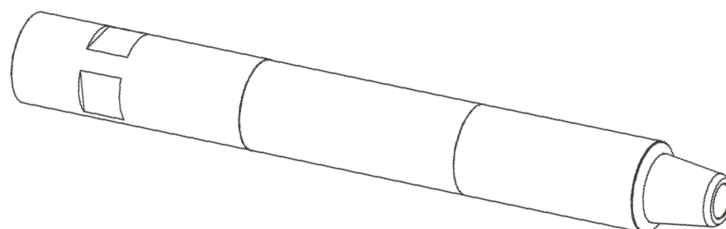
Schramm Carousell

OD	WT	Lenght	Weight	Measurements, mm							Thread	Thread	Product
A	B	L	Kg	C	D	E	F	G	H	K	Box	Pin	No.
89	8.0	6096	103	43	82.8	70	95	168	140	69.85	2 3/8" IF	2 3/8" IF	10-2001
89	10	6096	125	43	82.8	70	95	168	140	69.85	2 3/8" IF	2 3/8" IF	10-1743
114	8.8	6000	151	53	98.4	70	95.25	164.8	146.6	88.9	2 7/8" IF	2 7/8" IF	10-1170
114	8.8	6096	152	53	98.4	70	95.25	164.8	146.6	88.9	2 7/8" IF	2 7/8" IF	10-1213
114	8.8	7620	187	53	98.4	70	95.25	164.8	146.6	88.9	2 7/8" IF	2 7/8" IF	10-1214
114	8.8	6000	151	43	98.4	70	95.25	164.8	146.6	88.9	3 1/2" Reg	3 1/2" Reg	10-1177
114	8.8	6096	152	43	98.4	70	95.25	164.8	146.6	88.9	3 1/2" Reg	3 1/2" Reg	10-1492
114	8.8	7620	187	43	98.4	70	95.25	164.8	146.6	88.9	3 1/2" Reg	3 1/2" Reg	10-1178
114	8.8	6096	152	58	98.4	70	95.25	164.8	146.6	88.9	NC 35	NC 35	10-1779
114	12	6096	204	43	98.4	70	95.25	164.8	146.6	88.9	3 1/2" Reg	3 1/2" Reg	10-1769
114	12	7620	252	43	98.4	70	95.25	164.8	146.6	88.9	3 1/2" Reg	3 1/2" Reg	10-1737



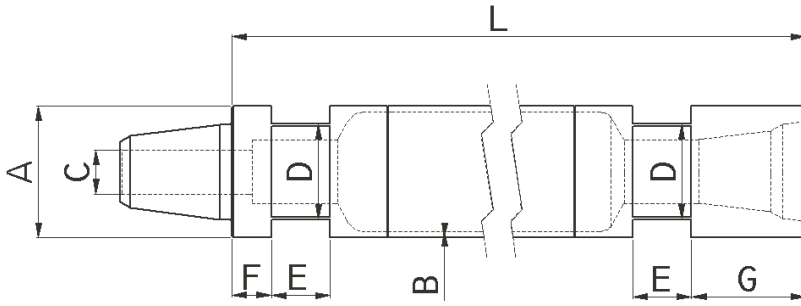
Schramm T64

OD	WT	Lenght	Weight	Measurements, mm				Thread	Thread	Product
A	B	L	Kg	C	D	E	F	Box	Pin	No.
114	8.8	6096	157	43	98.4	57	95	3 1/2" Reg	3 1/2" Reg	10-1445
114	8.8	6248	160	43	98.4	57	95	3 1/2" Reg	3 1/2" Reg	10-1845





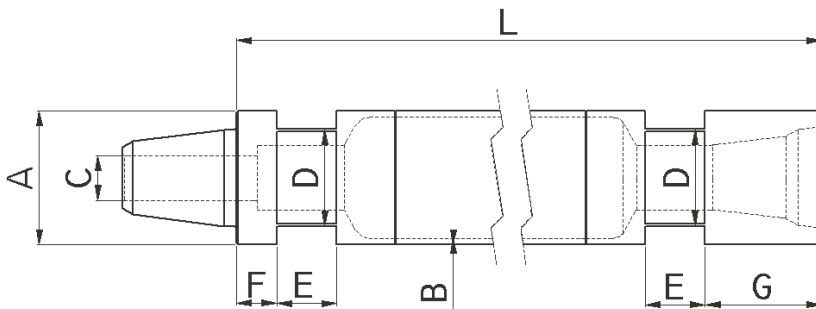
Schramm NT/WF



OD A	WT B	Length L	Weight Kg	Measurements, mm					Thread Box	Thread Pin	Product No.
				C	D	E	F	G			
114	8.8	6248	152	43	95	50	30	75	3 1/2" Reg	3 1/2" Reg	10-1580
114	8.8	6401	155	43	95	50	30	75	3 1/2" Reg	3 1/2" Reg	10-1591
114	8.8	6706	160	43	95	50	30	75	3 1/2" Reg	3 1/2" Reg	10-1581

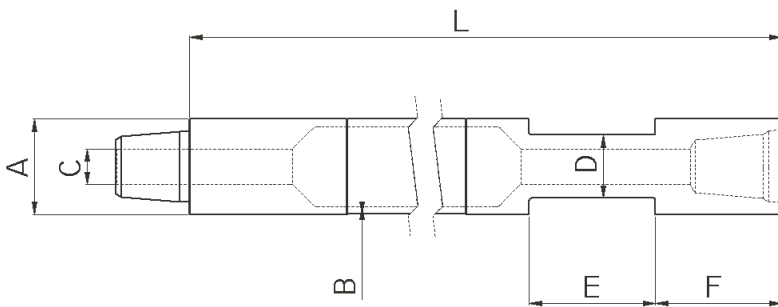


Start pipe



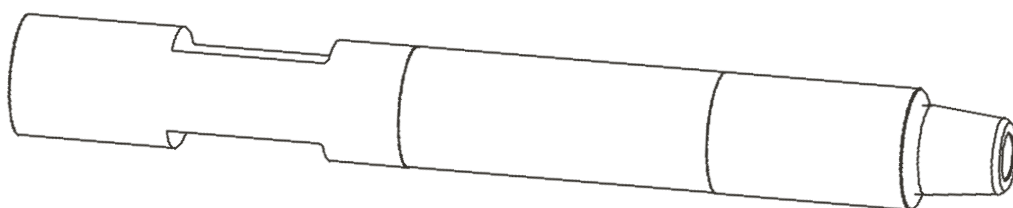
OD A	WT B	Length L	Weight Kg	Measurements, mm					Thread Box	Thread Pin	Product No.
				C	D	E	F	G			
76	6.3	1200	16	30	65	40	27	85	2 3/8" Reg	2 3/8" Reg	10-1615
76	6.3	1220	16	30	65	40	27	85	2 3/8" Reg	2 3/8" Reg	10-1355
76	6.3	1400	18	30	65	40	27	85	2 3/8" Reg	2 3/8" Reg	10-1971
76	6.3	1600	20	30	65	40	27	85	2 3/8" Reg	2 3/8" Reg	10-1524
76	6.3	1650	20	30	65	40	27	85	2 3/8" Reg	2 3/8" Reg	10-1950
76	6.3	1700	21	30	65	40	27	85	2 3/8" Reg	2 3/8" Reg	10-1442
76	6.3	1720	21	30	65	40	27	85	2 3/8" Reg	2 3/8" Reg	10-1813
76	6.3	1800	22	30	65	40	27	85	2 3/8" Reg	2 3/8" Reg	10-1369
76	6.3	1830	22	30	65	40	27	85	2 3/8" Reg	2 3/8" Reg	10-1318
76	6.3	1900	23	30	65	40	27	85	2 3/8" Reg	2 3/8" Reg	10-1052
76	6.3	2100	25	30	65	40	27	85	2 3/8" Reg	2 3/8" Reg	10-1384
76	6.3	2200	26	30	65	40	27	85	2 3/8" Reg	2 3/8" Reg	10-1259
76	6.3	2250	27	30	65	40	27	85	2 3/8" Reg	2 3/8" Reg	10-1560
76	6.3	2860	17	30	65	40	27	85	2 3/8" Reg	2 3/8" Reg	10-2019
89	6.3	1070	17	30	65	40	27	78	2 3/8" Reg	2 3/8" Reg	10-1427
89	6.3	1200	19	30	65	40	27	78	2 3/8" Reg	2 3/8" Reg	10-1537
89	6.3	1220	19	30	65	40	27	78	2 3/8" Reg	2 3/8" Reg	10-1468
89	6.3	1225	19	30	65	40	27	78	2 3/8" Reg	2 3/8" Reg	10-1452
89	6.3	1300	20	30	65	40	27	78	2 3/8" Reg	2 3/8" Reg	10-1239
89	6.3	1350	21	30	65	40	27	78	2 3/8" Reg	2 3/8" Reg	10-1225
89	6.3	1375	21	30	65	40	27	78	2 3/8" Reg	2 3/8" Reg	10-1796
89	6.3	1400	22	30	65	40	27	78	2 3/8" Reg	2 3/8" Reg	10-1589
89	6.3	1440	22	30	65	40	27	78	2 3/8" Reg	2 3/8" Reg	10-1759
89	6.3	1450	22	30	65	40	27	78	2 3/8" Reg	2 3/8" Reg	10-1732
89	6.3	1530	23	30	65	40	27	78	2 3/8" Reg	2 3/8" Reg	10-1594
89	6.3	1600	24	30	65	40	27	78	2 3/8" Reg	2 3/8" Reg	10-1440
89	6.3	1620	24	30	65	40	27	78	2 3/8" Reg	2 3/8" Reg	10-1471
89	6.3	1650	25	30	65	40	27	78	2 3/8" Reg	2 3/8" Reg	10-1463

OD A	WT B	Lenght L	Weight Kg	Measurements, mm					Thread Box	Thread Pin	Product No.
				C	D	E	F	G			
89	6.3	1700	25	30	65	40	27	78	2 3/8" Reg	2 3/8" Reg	10-1366
89	6.3	1750	26	30	65	40	27	78	2 3/8" Reg	2 3/8" Reg	10-1757
89	6.3	1765	26	30	65	40	27	78	2 3/8" Reg	2 3/8" Reg	10-1826
89	6.3	1770	27	30	65	40	27	78	2 3/8" Reg	2 3/8" Reg	10-1454
89	6.3	1800	28	30	65	40	27	78	2 3/8" Reg	2 3/8" Reg	10-1192
89	6.3	1825	28	30	65	40	27	78	2 3/8" Reg	2 3/8" Reg	10-1350
89	6.3	1850	29	30	65	40	27	78	2 3/8" Reg	2 3/8" Reg	10-1421
89	6.3	1885	29	30	65	40	27	78	2 3/8" Reg	2 3/8" Reg	10-1504
89	6.3	1900	29	30	65	40	27	78	2 3/8" Reg	2 3/8" Reg	10-1215
89	6.3	1950	29	30	65	40	27	78	2 3/8" Reg	2 3/8" Reg	10-1419
89	6.3	2100	31	30	65	40	27	78	2 3/8" Reg	2 3/8" Reg	10-1332
89	6.3	2110	31	30	65	40	27	78	2 3/8" Reg	2 3/8" Reg	10-1448
89	6.3	2150	31	30	65	40	27	78	2 3/8" Reg	2 3/8" Reg	10-1569
89	6.3	2200	32	30	65	40	27	78	2 3/8" Reg	2 3/8" Reg	10-1408
89	6.3	2250	33	30	65	40	27	78	2 3/8" Reg	2 3/8" Reg	10-1550
114	6.3	1100	27	43	95	50	30	75	3 1/2" Reg	3 1/2" Reg	10-1797
114	6.3	1200	29	43	95	50	30	75	3 1/2" Reg	3 1/2" Reg	10-1133
114	6.3	1220	29	43	95	50	30	75	3 1/2" Reg	3 1/2" Reg	10-1466
114	6.3	1300	31	43	95	50	30	75	3 1/2" Reg	3 1/2" Reg	10-1805
114	6.3	1700	38	43	95	50	30	75	3 1/2" Reg	3 1/2" Reg	10-1135
114	6.3	1800	40	43	95	50	30	75	3 1/2" Reg	3 1/2" Reg	10-1136
114	6.3	1830	40	43	95	50	30	75	3 1/2" Reg	3 1/2" Reg	10-1536
114	6.3	1900	42	43	95	50	30	75	3 1/2" Reg	3 1/2" Reg	10-1137
114	8.8	1050	34	43	95	50	30	75	3 1/2" Reg	3 1/2" Reg	10-1702
114	8.8	1100	35	43	95	50	30	75	3 1/2" Reg	3 1/2" Reg	10-1335
114	8.8	1200	38	43	95	50	30	75	3 1/2" Reg	3 1/2" Reg	10-1218
114	8.8	1250	39	43	95	50	30	75	3 1/2" Reg	3 1/2" Reg	10-1380
114	8.8	1300	40	43	95	50	30	75	3 1/2" Reg	3 1/2" Reg	10-1671
114	8.8	1350	41	43	95	50	30	75	3 1/2" Reg	3 1/2" Reg	10-1243
114	8.8	1400	42	43	95	50	30	75	3 1/2" Reg	3 1/2" Reg	10-1263
114	8.8	1700	46	43	95	50	30	75	3 1/2" Reg	3 1/2" Reg	10-1333
114	8.8	1800	49	43	95	50	30	75	3 1/2" Reg	3 1/2" Reg	10-1217



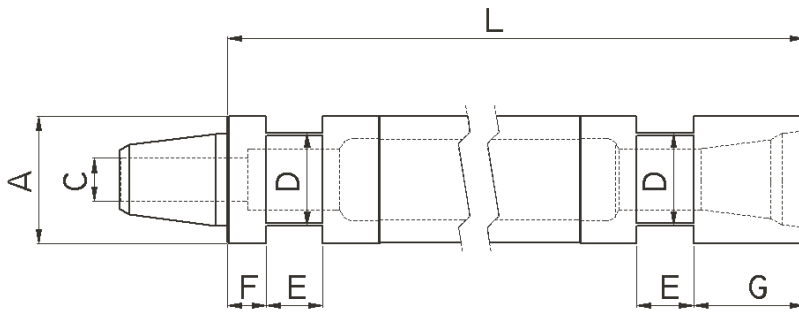
Speed Star

OD A	WT B	Lenght L	Weight Kg	Measurements, mm				Thread Box	Thread Pin	Product No.
				C	D	E	F			
114	8.8	7620	1930	43	76	152	152	2 7/8" IF	2 7/8" IF	10-2609





Drill Collar

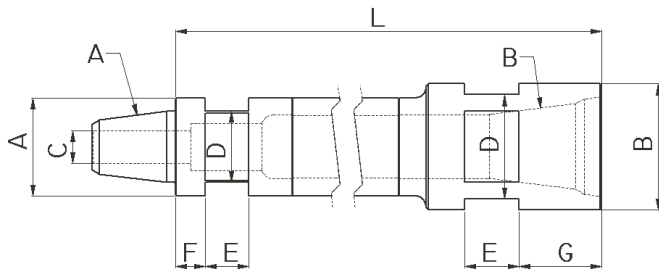


OD A	WT B	Length L	Weight Kg	Measurements, mm					Thread Box	Thread Pin	Product No.
				C	D	E	F	G			
89	1000		31	30	65	40	27	78	2 3/8" Reg	2 3/8" Reg	12-1050
89	1300		38	30	65	40	27	78	2 3/8" Reg	2 3/8" Reg	12-1062
89	1500		44	30	65	40	27	78	2 3/8" Reg	2 3/8" Reg	12-1005
89	1550		45	30	65	40	27	78	2 3/8" Reg	2 3/8" Reg	12-1069
89	1560		45	30	65	40	27	78	2 3/8" Reg	2 3/8" Reg	12-1073
89	1600		46	30	65	40	27	78	2 3/8" Reg	2 3/8" Reg	12-1053
89	1650		47	30	65	40	27	78	2 3/8" Reg	2 3/8" Reg	12-1056
89	1670		48	30	65	40	27	78	2 3/8" Reg	2 3/8" Reg	12-1078
89	1700		49	30	65	40	27	78	2 3/8" Reg	2 3/8" Reg	12-1006
89	1750		50	30	65	40	27	78	2 3/8" Reg	2 3/8" Reg	12-1063
89	1760		50	30	65	40	27	78	2 3/8" Reg	2 3/8" Reg	12-1075
89	1800		53	30	65	40	27	78	2 3/8" Reg	2 3/8" Reg	12-1047
89	1820		53	30	65	40	27	78	2 3/8" Reg	2 3/8" Reg	12-1071
89	1830		53	30	65	40	27	78	2 3/8" Reg	2 3/8" Reg	12-1043
89	1840		54	30	65	40	27	78	2 3/8" Reg	2 3/8" Reg	12-1066
89	1845		54	30	65	40	27	78	2 3/8" Reg	2 3/8" Reg	12-1070
89	1850		54	30	65	40	27	78	2 3/8" Reg	2 3/8" Reg	12-1040
89	1860		54	30	65	40	27	78	2 3/8" Reg	2 3/8" Reg	12-1076
89	1870		55	30	65	40	27	78	2 3/8" Reg	2 3/8" Reg	12-1034
89	1900		55	30	65	40	27	78	2 3/8" Reg	2 3/8" Reg	12-1041
89	1950		56	30	65	40	27	78	2 3/8" Reg	2 3/8" Reg	12-1037
89	1970		57	30	65	40	27	78	2 3/8" Reg	2 3/8" Reg	12-1064
89	2000		57	30	65	40	27	78	2 3/8" Reg	2 3/8" Reg	12-1007
89	2200		61	30	65	40	27	78	2 3/8" Reg	2 3/8" Reg	12-1077
89	2250		62	30	65	40	27	78	2 3/8" Reg	2 3/8" Reg	12-1080
89	1500		44	43	65	40	27	78	RD 70-4	RD 70-4	12-1001
89	2000		57	43	65	40	27	78	RD 70-4	RD 70-4	12-1002
89	3000		83	43	65	40	27	78	RD 70-4	RD 70-4	12-1036
114	1500		102	43	95	50	50	150	3 1/2" Reg	3 1/2" Reg	12-1054
114	3000		203	43	95	50	50	150	3 1/2" Reg	3 1/2" Reg	12-1051
114	3000		203	65	95	50	50	150	3 1/2" IF	3 1/2" IF	12-1030
127	2000		154	58	95	50	50	150	3 1/2" IF	3 1/2" IF	12-1072
127	3000		233	58	95	50	50	150	3 1/2" IF	3 1/2" IF	12-1011
140	1500		146	43	95	50	50	90	3 1/2" Reg	3 1/2" Reg	12-1022
140	3000		292	43	95	50	50	90	3 1/2" Reg	3 1/2" Reg	12-1010
140	3000		292	65	120	50	50	152	3 1/2" IF	3 1/2" IF	12-1012
140	3048		297	65	120	50	50	152	3 1/2" IF	3 1/2" IF	12-1013
140	6000		585	65	120	50	50	152	3 1/2" IF	3 1/2" IF	12-1014
140	6096		595	65	120	50	50	152	3 1/2" IF	3 1/2" IF	12-1015
140	1366		133	60	120	50	30	152	4 1/2" Reg	4 1/2" Reg	12-1059
140	1900		185	60	120	50	30	152	4 1/2" Reg	4 1/2" Reg	12-1039
140	7010		683	70	120	50	30	152	4" FH	4" FH	12-1020
140	9144		891	70	120	50	30	152	4" FH	4" FH	12-1084
159	3000		385	65	120	50	50	152	3 1/2" IF	3 1/2" IF	12-1031
159	6000		775	65	120	50	50	152	3 1/2" IF	3 1/2" IF	12-1017

OD A	WT B	Lenght L	Weight Kg	Measurements, mm					Thread Box	Thread Pin	Product No.
				C	D	E	F	G			
168		9144	1340	58	120	50	50	152	4 1/2" Reg	4 1/2" Reg	12-1085
200		2800	590	75	178	50	50	150	4 1/2" IF	4 1/2" IF	12-1067
203		2438	490	65	178	50	50	160	3 1/2" IF	3 1/2" IF	12-1018
203		3000	604	65	178	50	50	160	3 1/2" IF	3 1/2" IF	12-1019
203		6000	1212	60	178	50	50	160	4 1/2" Reg	4 1/2" Reg	12-1026
203		1500	300	85	178	50	50	160	6 5/8 Reg	6 5/8 Reg	12-1029
203		3000	604	85	178	50	50	160	6 5/8 Reg	6 5/8 Reg	12-1021
203		6000	1212	85	178	50	50	160	6 5/8 Reg	6 5/8 Reg	12-1025



Drill Collar



OD A	OD B	Lenght L	Weight Kg	Measurements, mm					Thread Box	Thread Pin	Product No.
				C	D	E	F	G			
89	89	2000	57	30	65	40	27	110	2 3/8" Reg	2 3/8" IF	12-1082
89	89	1500	44	30	65	27	27	78	2 3/8" Reg	RD 70-4	12-1003
89	114	1400	45	30	65/95	40/50	27	75	2 3/8" Reg	3 1/2" Reg	12-1035
89	114	1500	47	30	65/95	40/50	27	75	2 3/8" Reg	3 1/2" Reg	12-1009
89	114	1550	48	30	65/95	40/50	27	75	2 3/8" Reg	3 1/2" Reg	12-1060
89	114	1750	54	30	65/95	40/50	27	75	2 3/8" Reg	3 1/2" Reg	12-1058
89	114	1800	56	30	65/95	40/50	27	75	2 3/8" Reg	3 1/2" Reg	12-1049
89	114	1850	57	30	65/95	40/50	27	75	2 3/8" Reg	3 1/2" Reg	12-1079
89	114	1900	59	30	65/95	40/50	27	75	2 3/8" Reg	3 1/2" Reg	12-1023
89	114	2000	62	30	65/95	40/50	27	75	2 3/8" Reg	3 1/2" Reg	12-1052
89	114	1800	56	30	65/95	40/50	27	75	2 3/8" IF	3 1/2" Reg	12-1065



Postadress / Mail address

Box 325, SE-686 26 Sunne
Sweden

Besöksadress / Visiting address

Svetsarvägen 4, Sunne
Sweden

Tel. +46 (0)565-121 10

Fax. +46 (0)565-146 20

E-mail: info@driconeq.com

Web: www.driconeq.com